

PERRY WORLD HOUSE

UNIVERSITY of PENNSYLVANIA



PERRY WORLD HOUSE

2016-17 **ANNUAL REPORT**

CONTENTS

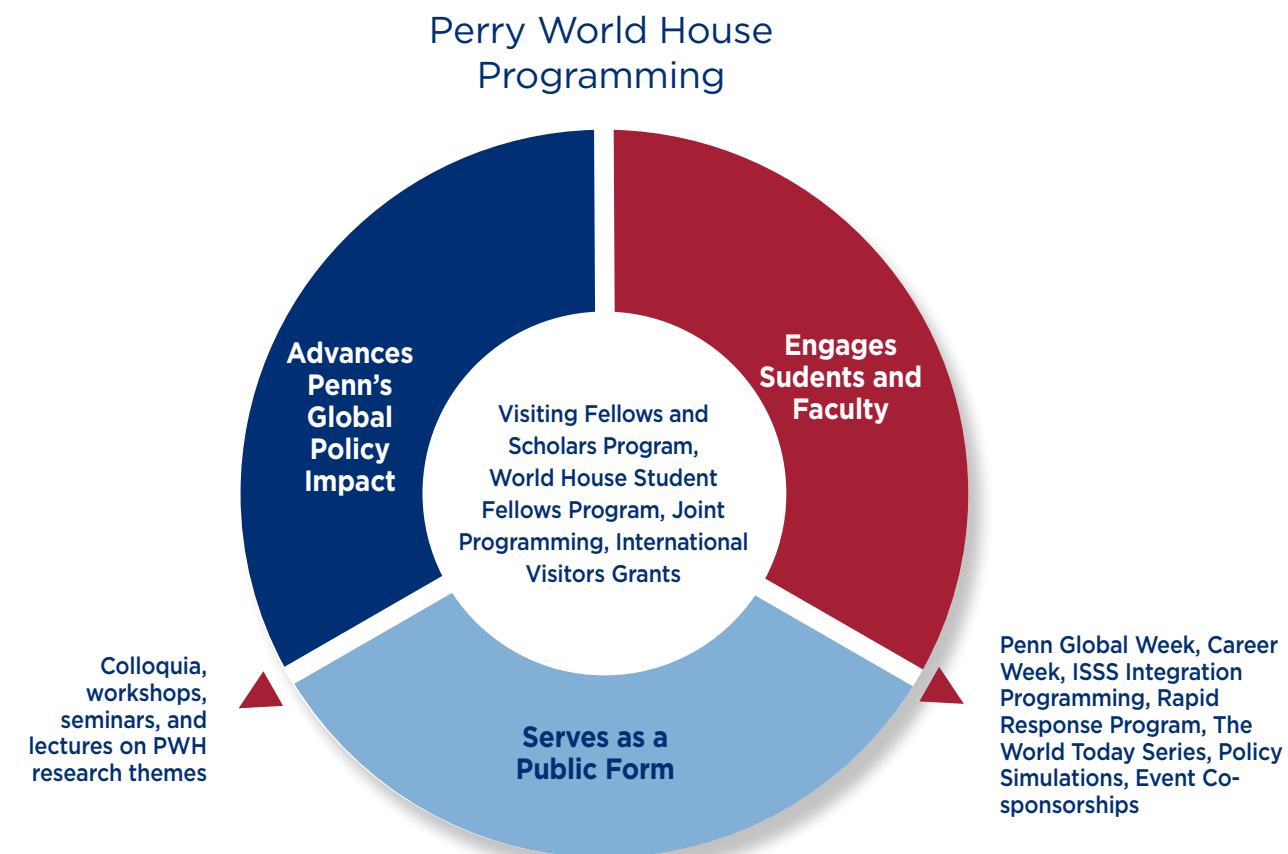
About Perry World House	2	Visiting Fellows and Visiting Scholars	25
A Message from Dr. Amy Gutmann President of the University of Pennsylvania	3	The Postdoctoral Fellowship Program	29
A Message from Wendell Pritchett Provost of the University of Pennsylvania	4	The Building	30
A Message from Bill Burke-White Director of Perry World House	5	Perry World House as a Public Forum and Convening Nexus	32
Senior Leadership	7	A Convening Space for the Penn Community Through Co-Sponsorship	33
Grand Opening: Launching Penn's New Center for Global Affairs	8	International Visitors Grant Program	34
The Global Innovation Program: Cutting-Edge Research at the Intersection of Academia and Policymaking	12	Preparing Penn Students to be Engaged Global Citizens	35
Global Innovation Program: Publications and Outputs	15	The World House Student Fellows Program	36
Global Innovation Program: Colloquia and Workshops	17	General Student Programming	38
The World House Seminar Series	24	The Perry World House Research Fellowship	40
		Partnering with Philadelphia's Academic and Policy Communities	41
		Looking Ahead: 2017-18 and Beyond	42



ABOUT PERRY WORLD HOUSE

A global policy research center at the University of Pennsylvania, Perry World House (PWH) advances interdisciplinary, policy-relevant research on the world's most urgent global affairs challenges. At a time of increasing ideological division, the politicization of policymaking, and challenges to multilateral institutions, PWH leverages the extraordinary range of expertise found across Penn's 12 schools and dozens of research centers, connecting Penn with policymakers, practitioners, and researchers from around the world to develop and advance innovative policy proposals.

Perry World House is also a hub for global engagement at Penn—a place where faculty come together with practitioners, policymakers, and other academics to formulate novel policy solutions; a place where students come to learn about global policy, participate in internationally focused programs, and expand their global footprint; and a place where the broader Penn and Philadelphia communities connect with the world around pressing global challenges. Housed at the new state-of-the-art building at the center of Penn's campus, PWH is uniquely positioned to convene world leaders, cutting-edge practitioners, and top thought leaders. High-level workshops, colloquia, roundtables, and publications link Penn to the global policy community so that the best ideas have impact when they are needed most.



A Message from Dr. Amy Gutmann President of the University of Pennsylvania

August 2017

Dear Friends:

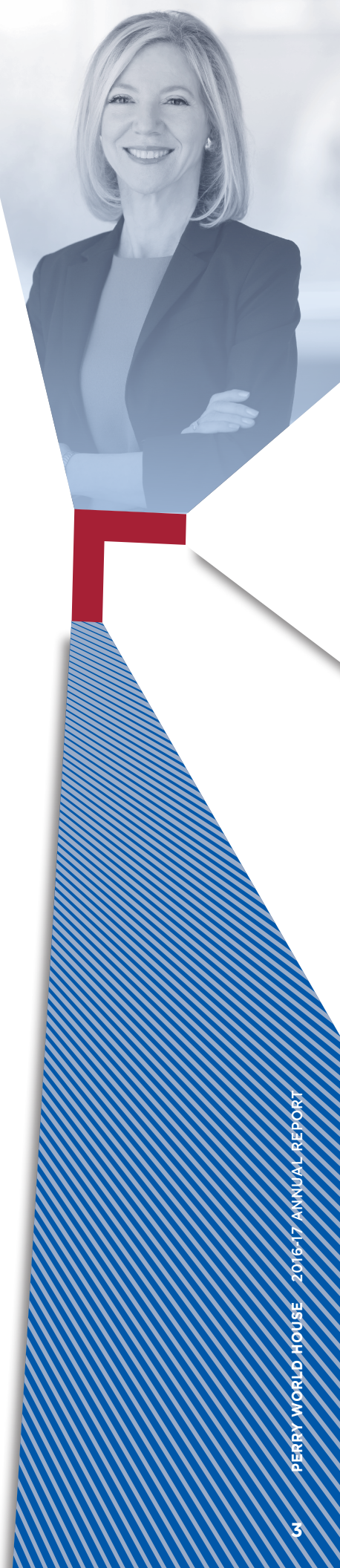
Penn's deep international roots stretch all the way back to the days when our founder, Benjamin Franklin, navigated the channels of French power as America's first ambassador. The focus of our ongoing efforts reach to the future. On a beautiful day last September, with the cutting of a ribbon, we celebrated a stunning new building and a thrilling new chapter in Penn's robust history of global engagement. In its first year alone, Perry World House achieved the work of a decade, bringing international leaders and global scholars to Penn and empowering our talented students, brilliant faculty, and superb staff to bring Penn to the world like never before.

Global engagement that effects real and lasting change is a central tenet of our strategic University plan, the *Penn Compact 2020*, and among my highest priorities as President. Essential to our shared vision, Perry World House has quickly become *the* campus portal for the most significant scholarship and timely discussion on the most pressing international issues we face. From welcoming ambassadors and eminent visiting scholars, to the recruitment of Benjamin Franklin Presidential Practice Professor and former U.S. Vice President Joe Biden and the founding of the Penn Biden Center for Diplomacy and Global Engagement, this year has seen Penn's global engagement efforts soar.

On behalf of the entire Penn community, I thank and commend University Trustee Richard Perry and his wife, Lisa, for their profound generosity and vision; Perry World House Director Bill Burke-White and his team for their outstanding work; and the faculty, scholars, students, and staff who have brought such vitality to this crucial initiative. With such momentum, I am confident that in the second year of Perry World House and beyond, we will achieve even greater heights in bringing the world to Penn and Penn to the world.

Sincerely,

Amy Gutmann





A Message from Dr. Wendell Pritchett Provost of the University of Pennsylvania

August 2017

Dear Friends:

The great Nigerian writer Chimamanda Ngozi Adichie, in a 2005 interview, described global experiences as a “process of finding.” Specifically, she continues, “I think you travel to search and come back home to find yourself there... I’m not sure I would have this strong sense of being Nigerian if I had not left Nigeria.”

Perry World House, in only its first year, has become our catalyst and campus home for these journeys, which are both geographical and intellectual. It offers us, for the first time, a tangible space—a space that is simultaneously striking and welcoming—to integrate global experience into daily life on our campus, to provide that home from which our students, faculty, and distinguished visitors can “travel to search,” thinking collectively about the most urgent challenges of our interconnected world.

Last year, I participated, along with other Penn faculty members, in the meetings and workshops organized by Perry World House around the United Nations Conference on Housing and Urban Sustainable Development (Habitat III) in Quito, Ecuador. I was struck by how fluidly Perry World House brought together global leaders, scholars, and policy-makers committed to equitable and sustainable urban development. Their common vision and purpose hold great promise to help the most disadvantaged members of our communities across the world.

These inaugural Perry World House themes of Global Order and Global Shifts today remain more relevant than ever. As we face together an unsettled world environment, I look forward to continuing to foster these discussions as Provost and to supporting Perry World House’s future growth. Perry World House has enormous potential to shape global thinking not only across our campus but also in the wider arena of scholars, writers, and policy-makers around the world.

Global experience, as Adichie writes, “is not the end point, it is the process.” I join President Gutmann in congratulating Perry World House on its remarkable first year of guiding us on this voyage of intellectual discovery and global exploration, which it will surely continue to lead for many years to come.

Sincerely,

Wendell Pritchett

A Message from Bill Burke-White Director, Perry World House



Friends of Perry World House:

As we come to the end of an extraordinary inaugural year, I want to reflect on what we have accomplished and the path ahead for Perry World House. In September, we formally opened the doors of our beautiful new building on Locust Walk, at the heart of campus. Former U.N. High Commissioner for Human Rights Navi Pillay joined with former U.S. Secretary of Defense Robert Gates to cut the ribbon and discuss the challenges of international human rights and global security, symbolizing much of what PWH is all about: bringing global

policy leadership to Penn; examining critical international policy challenges from multiple perspectives and disciplines; convening conversations that change the way Penn faculty, students, and the broader community understand and engage global affairs; and ultimately, helping make Penn a global agenda-setter.

In our opening year, PWH launched two major research themes in response to critical challenges facing the international community and reflecting the exceptional academic knowledge housed across the University of Pennsylvania: *The Future of the Global Order: Power, Technology, and Governance* and *Global Shifts: Urbanization, Migration, and Demography*. For each theme, in conjunction with all 12 of Penn’s schools, as well as a wide range of programs, research centers, and institutes across the University, we convened numerous workshops and colloquia, commissioned research papers, and hosted distinguished policy visitors from around the world. Two particular highlights for me were former U.S. Ambassador to the United Nations Samantha Power’s remarkable call to action to welcome refugees at our April 2017 Global Shifts conference, and a thoughtful dinner conversation in which Penn faculty discussed Brexit and Europe’s future role in the international system with Lady Catherine Ashton, the former E.U. foreign policy chief.

Engaging Penn students in global affairs is also a core mission of PWH. In our first year, new conversations about multilateralism, technology use in warfare, U.S. foreign policy, human rights, the integration of refugees, and climate change could be heard on Locust Walk. Our first cohort of World House Student Fellows included an extraordinary group of 25 undergraduates from all four of Penn’s undergraduate schools. These student

fellows undertook team research projects on a range of important policy questions, worked closely with our Visiting Fellows, and helped advance the research mission of PWH. I will long remember listening to four of these students presenting their final report about the Asian Infrastructure Development Bank to a group of leading international economic policymakers, in awe of the interviews they had conducted and their conclusions about how the U.S. could better engage the new bank.

While this first year has been a remarkable start, it was just that. We have ambitious plans for the year ahead, with highlights that include advancing the research linked to our Global Shifts and Global Order themes, producing outputs with meaningful policy impact, launching our Graduate Student Fellows Program, expanding the global reach of Visiting Policy Fellows, and deepening our cooperation with the new Penn Biden Center for Diplomacy and Global Engagement.

I am deeply grateful to all who helped to make Perry World House a reality. None of this would have been possible without Lisa and Richard Perry's extraordinary vision, generosity, and friendship, which have, literally, made Perry World House possible. The consistent support and vision from President Gutmann and guidance from our former Provost, Vince Price, and Vice Provost for Global Initiatives, Zeke Emanuel, have been invaluable. Perhaps most important, however, the enthusiasm, goodwill, engagement, and participation from the entire Penn community—faculty, staff, students, and alums—have brought Perry World House to life.

I look forward to seeing you in the year ahead at an event in the World Forum, a debate in the Global Policy Lab, or a coffee in the Student Lounge!

With best wishes,



Bill Burke-White
Director, Perry World House
Richard Perry Professor
University of Pennsylvania

SENIOR LEADERSHIP



WILLIAM W. BURKE-WHITE
Richard Perry Professor; Director, Perry World House

William Burke-White is a professor of law at Penn Law School and inaugural director of Perry World House. An international lawyer and political scientist, Burke-White researches and writes about the relationships between law and politics in international affairs. His current scholarship examines how the rise of countries such as China, Russia, Brazil, and India is changing the international legal system and the prospects for effective international responses to global governance challenges. Burke-White has published extensively in the fields of international law and institutions, with particular focus on global governance institutions, international criminal law, human rights law, and international financial law. From 2009 to 2011, Burke-White served in the Obama Administration on the Secretary of State's Policy Planning Staff, where he crafted recommendations on multilateral affairs, international institutions, and the Russian Federation. He was also the principal drafter and participated in the implementation of the Quadrennial Diplomacy and Development Review. Burke-White holds both a bachelor's and law degrees from Harvard University, and an M.Phil. and Ph.D. in international relations from Cambridge University, where he was a Fulbright Scholar. Burke-White is a member of the Council on Foreign Relations and the American Society of International Law.



MICHAEL C. HOROWITZ
Associate Director

Michael C. Horowitz is professor of political science and the associate director of Perry World House. He recently won the 2017 Karl Deutsch Award given by the International Studies Association for early career contributions to the fields of international relations and peace research. Horowitz is the co-author of the book *Why Leaders Fight* and the author of the award-winning book *The Diffusion of Military Power: Causes and Consequences for International Politics*. His research interests include technology and global politics, military innovation, the role of leaders in international politics, and geopolitical forecasting. He has published in a wide array of peer-reviewed and popular outlets. Horowitz previously worked for the Office of the Undersecretary of Defense for Policy in the Department of Defense. He is affiliated with the Center for a New American Security, the Foreign Policy Research Institute, and the Center for Strategic and International Studies. Horowitz received his Ph.D. in Government from Harvard University and his B.A. in political science from Emory University.



LASHAWN R. JEFFERSON
Deputy Director

LaShawn R. Jefferson brings to Perry World House more than two decades of women's human rights activism and advocacy, through civil-society organizations and philanthropy. She joined Perry World House after almost seven years at the Ford Foundation, where she worked to advance women's human rights globally and in the U.S. through field building and investments in the areas of rights advocacy; strategic communications and engagement; intersectional leadership and analysis; research; and capacity building. For 14 years, she also held several leadership positions at Human Rights Watch, where she led their women's human rights research and advocacy work, providing strategic and intellectual guidance, crafting and executing long-term advocacy strategies, and representing HRW at the highest levels of national and international fora. She received a B.A. from Connecticut College and an M.A. in International Relations and Latin American Studies from the Johns Hopkins University School of Advanced International Studies.

“Perry World House embodies Penn’s deepest values: intellectual innovation, global impact, and the inclusion of a rich array of perspectives and backgrounds. In only its first year, it has already become an integral part of the Penn experience.”

– Wendell Pritchett
Provost, University of Pennsylvania

GRAND OPENING



A ribbon-cutting ceremony with University Trustee Richard Perry and his wife, Lisa Perry, Perry World House Director William Burke-White, Penn President Amy Gutmann, Former U.S. Secretary of Defense Robert Gates, and Former United Nations High Commissioner for Human Rights Navi Pillay (left to right).

Grand Opening: Launching Penn's New Center for Global Affairs

On September 19 and 20, 2016, the University of Pennsylvania ushered in a new era for Penn's global engagement and international policy impact with the grand opening of Perry World House.

The program celebrated the interconnected missions of PWH—convening conversations around the most pressing global challenges, catalyzing interdisciplinary academic research with policy-relevant potential, creating a home for international students and students with international interests, and connecting Penn to the world.



Navi Pillay, former United Nations high commissioner for human rights, delivers an opening keynote address, "The Magnificent System of Human Rights: Achievements and Challenges," in the World Forum at Perry World House.



An ambassadorial roundtable discussion about the future of international trade and development, featuring William Burke-White; Ambassador Ashok Kumar Mirpuri, ambassador to the United States from Singapore; Ambassador Caroline Vicini, deputy head of the European Union Mission to Washington; Ambassador Husain Haqqani, former ambassador to the United States from Pakistan; and Ambassador Boris Ruge, deputy chief of mission of the Embassy of Germany (left to right).

The grand opening included cutting the ribbon on the extraordinary new building at the heart of Penn's campus, opening a physical space that has transformed Penn's intellectual space, and bringing together students and faculty from across Penn's schools and departments with practitioners and policymakers from around the world.

The program highlighted the important roles that PWH plays in Penn's global engagement. Sept. 19 showcased the initial research agenda of the Global Innovation Program, the foreign policy think-tank pillar of PWH. Panel discussions brought together academic thinkers and international policymakers to examine topics at the forefront of global affairs, including emerging technologies, urbanization and migration, religion and politics, and the future of the international order. Sept. 20—the day of the formal ribbon cutting—turned to the relationship between academe and policy, with a series of high-level events focused on the future of U.S. foreign policy. The program concluded with a keynote conversation between Penn President Amy Gutmann and former U.S. Secretary of Defense Robert Gates.



A moderated dialogue about U.S. foreign policy after the 2016 election with Jon Huntsman, former ambassador to Singapore and China and former governor of Utah; Zalmay Khalilzad, former U.S. ambassador to Iraq; Frances Townsend, former homeland security advisor to President George W. Bush; Kurt Campbell, former assistant secretary of state; Anne-Marie Slaughter, president and CEO of New America; moderated by Michael Crowley, *Politico* senior foreign affairs correspondent (left to right).

THE GLOBAL INNOVATION PROGRAM: Cutting-Edge Research at the Intersection of Academia and Policymaking

The Global Innovation Program is the vehicle through which Perry World House advances its mission of research and policy impact. A global policy think tank within PWH, the Global Innovation Program brings Penn’s academic knowledge to bear on major global policy challenges.

Under its rubric, PWH has launched two principal research themes: **The Future of the Global Order: Power, Technology, and Governance** and **Global Shifts: Urbanization, Migration, and Demography**. In each theme, the Global Innovation Program convenes interdisciplinary dialogues that bring together the worlds of policy and academia to generate impactful research products that influence policymaking in global affairs. More concretely, the program:



THE FUTURE OF THE GLOBAL ORDER: POWER, TECHNOLOGY, AND GOVERNANCE

From Russia’s invasion of Ukraine and China’s construction of artificial islands in the South China Sea to the global economic and political effects of new technologies, the post-Cold War global order may be at a tipping point. Broader systemic trends, such as globalization and climate change, mean that the challenges of today and tomorrow will be global—and require global responses.



The role of automated trading algorithms in the 2010 “Flash Crash” in the United States, combined with the specter of drone warfare around the world and the proliferation of military robotics, highlight how the intersection of technologies presents enormous challenges and opportunities for global norms.

Fundamentally, *The Future of the Global Order* research theme examines implications of changing global power dynamics, impacts of new technologies, and contributions of governance institutions for the future of international cooperation. It seeks to understand the drivers of change and the varied implications of those changes. Additionally, it offers new ideas for the preservation and evolution of the international order.

Standing faculty members from Penn provide guidance and direction for each Global Innovation Program research theme. *The Future of the Global Order* research theme is led by:

William Burke-White, inaugural director of Perry World House, who holds the Richard Perry Professorship at the University of Pennsylvania, where he is also a professor of law. (Full bio available on page 7.)

Michael C. Horowitz, professor of political science and associate director of Perry World House at the University of Pennsylvania. (Full bio available on page 7.)

GLOBAL SHIFTS: URBANIZATION, MIGRATION, AND DEMOGRAPHY

Whether through migration or culture, choice or necessity, the adaptation of populations to changing environmental, social, political, and security contexts has always been critical to human existence. Today's global reality calls for no less. Political unrest, protracted conflict, climate change, population ageing, and economic hardship are just some of the complex issues contributing to dramatic population shifts.



These issues demand sophisticated and coordinated global attention that acknowledges how “global shifts” can have tremendous consequences for social order, human rights, governance, and cultural practices, among others. At a moment when the world is seeing the greatest level of displacement since World War II, unprecedented rates and patterns of urbanization, and new demographic trends, better understanding these complex and intersecting global phenomena is critical to identifying more salient policy responses.

This research theme identifies and advances evidence-based policies that—to borrow from the late Executive Director of the U.N. Population Fund, Babatunde Osotimehin—promote “people-centered, sensitive, humane, dignified, gender-responsive, and prompt” attention to people experiencing these global shifts.

Standing faculty members from Penn provide guidance and direction for each Global Innovation Program research theme. The *Global Shifts: Urbanization, Migration, and Demography* research theme is led by:

Eugenie Birch, the Lawrence C. Nussdorf Chair of Urban Research and Education. She teaches courses in planning history and global urbanization, serves as chair of the Graduate Group in City and Regional Planning, and is founding co-director of the Penn Institute for Urban Research. She was the chair of U.N.-HABITAT's World Urban Campaign (WUC, 2014-2016) and is currently the president of the General Assembly of Partners, the engagement platform that facilitated multiparty stakeholder contributions to Habitat III.

Devesh Kapur, the Madan Lal Sobti Professor for the Study of Contemporary India, professor of political science, and director, Center for the Advanced Study of India. He is a non-resident fellow at the Center for Global Development. His publications include *Diaspora, Democracy and Development: The Impact of International Migration from India on India*, which received the 2012 Distinguished Book Award of the International Studies Association, and *The Other One Percent: Indians in America*.

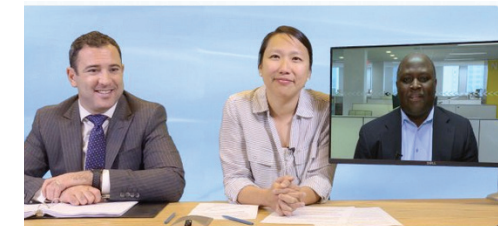
THE GLOBAL INNOVATION PROGRAM: Publications and Outputs

The ultimate goal of the Global Innovation Program is to influence and inform policy through the application of academic knowledge. While the convenings undertaken by Perry World House and our Visiting Fellows are a critical part of this mission, so are the range of tangible outputs produced.

The information and policy space today is both crowded and quickly changing. The era when book volumes and lengthy articles were the primary means of knowledge dissemination and influence has given way to a far wider variety of means that resonate with different communities, ranging from tweets to white papers, podcasts to blog posts. PWH has developed a number of different outputs to engage and catalyze core student, academic, and policy audiences.



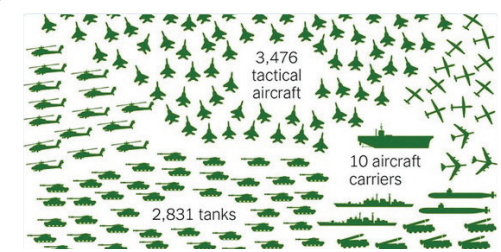
Perry World House @perryworldhouse • Jun 13
PWH Visiting Fellow Tom Wyler featured in @CaseinPointcast @PennLaw @PennNewToday on US & global trade agreements



Perry World House @perryworldhouse • Jun 13
Richard Clarke discusses the conflict in Syria with @MalcomNance @TheAAPSS



Perry World House @perryworldhouse • Mar 22
PWH Associate Director @mchorowitz quoted in @nytimes



Is America Military Big Enough?

A look at whether the military needs the \$54 billion budget infusion that President Trump has proposed.

nytimes.com

THE GLOBAL INNOVATION PROGRAM: Publications and Outputs

Perry World House Research Digests

highlight the work of Penn faculty on the core research themes of the Global Innovation Program. The first PWH Research Digest for our Global Shifts theme was released in October 2016 in conjunction with PWH's participation in the Habitat III conference in Quito, Ecuador.



Perry World House White Paper Series

draws together the research, findings, and conclusions of our signature colloquia and workshops, offering concrete policy recommendations on key questions and challenges. During the 2016-2017 year, PWH produced three white papers:

- “Advancing The New Urban Agenda in a Shifting World”
- “The Future of the Global Order: Emerging Technologies”
- “Global Shifts: An Examination of Marginalization and Inequality”

Deputy Director LaShawn R. Jefferson and PWH Visiting Fellow Anne Richard during a podcast recording on U.S. Refugee Policy (left to right).

Perry World House Blog and Podcasts

offer a rapid, readily accessible means of sharing information and ideas with the Penn community and beyond.

Popular blogposts from the first year include:

- “The Triumph of International Law Over Donald Trump and U.S. Global Leadership,” by William Burke-White, PWH director
- “Traditional Multilateral Institutions in Retreat?” by Lady Catherine Ashton, PWH visiting fellow
- “National Security and Team-Building: An Interview with Robert Scher,” PWH visiting fellow, by Michael Horowitz, PWH associate director

Notable podcasts from the first year include:

- “An Interview with Distinguished Visitors Madeleine Albright and Stephen Hadley”
- “The Importance of U.S. Refugee Policy with PWH Visiting Fellow Anne Richard”
- “Global Grassroots Activism with PWH Visiting Fellow Jockin Arputham”



THE GLOBAL INNOVATION PROGRAM: Colloquia and Workshops



Babatunde Osotimehin, the late executive director of the UN Population Fund, gives the opening address at Perry World House's Global Shifts colloquium.

THE GLOBAL INNOVATION PROGRAM: Colloquia and Workshops

Every year, Perry World House hosts a high-profile colloquium and several workshops in each research theme. By bringing together academics, policymakers and practitioners, industry leaders, students, and members of the public, PWH uses its signature model of multistakeholder convenings to generate interdisciplinary conversation, spark new ideas, highlight significant advancements, and frame policy outputs.

Inaugural Global Shifts Colloquium: *Urbanization, Migration, and Demography—An Examination of Marginalization & Inequality*

Spatial and structural population transformations are often deeply intertwined with marginalization and inequality. Understanding the sources and implications of these relationships is critical to creating policies that address societal change while protecting welfare and dignity for all people. On April 20-21, 2017, the first Perry World House Colloquium examined this topic, identifying which interdisciplinary academic research questions and policy gaps require the most urgent attention; how different types of policy interventions might mitigate marginalization and inequality; and how international institutions could better respond thereto. Following PWH's

signature model, the first day was devoted to presenting commissioned conference papers under the rubric of "Displacement to Development: How Marginalization and Inequality Shape Global Shifts." The second public day engaged the broader Penn community in high-level conversations around "The Manifestations of Marginalization and Inequality in Global Shifts." Keynote conversations with Samantha Power, former U.S. Ambassador to the United Nations; Anne Richard, former assistant secretary of state for Population, Refugees, and Migration; Jockin Arputham, president of Slum/Shack Dwellers International; and Aisa Kirabo Kacyira, deputy executive director of U.N.-Habitat, among others, stimulated the Penn community's thinking.

"It is an irrefutable fact that in this year of 2017, and for the foreseeable future, if the United States does not lead to overcome a collective action challenge in the international system to mobilize a global response [to the refugee crisis], nobody else can or will do so."

– Samantha Power, former U.S. Ambassador to the United Nations



"My office is in Dharavi in Mumbai. You can look at Dharavi as a super-size slum. Or as a very successful city generating hundreds of thousands of jobs and around 400 million dollars' worth of goods and services each year. Dharavi is not marginal to Mumbai's economy—but it is marginalized politically."

– Jockin Arputham
President, Slum/Shack Dwellers International



(Above) Keynote speaker Ambassador Samantha Power (center) with PWH Associate Director Michael Horowitz, PWH Director William Burke-White, Penn President Amy Gutmann, and University Trustee Richard Perry (left to right). (Top Left) Jockin Arputham, president of Slum/Shack Dwellers International. (Left) Hilmar von Lojewski, councilor for the Association of German Cities, and Anne Richard, former U.S. assistant secretary of state for population, refugees, and migration. (Bottom Left) Aisa Kirabo Kacyira, United Nations assistant secretary-general and deputy executive director of UN-Habitat.

**Global Shifts Policy Workshop:
Advancing The New Urban Agenda
in a Shifting World (Habitat III,
Quito, Ecuador)**

Perry World House played a key role in Penn's delegation to the United Nations Conference on Housing and Urban Sustainable Development (Habitat III) in Quito, Ecuador, in October 2016, engaging with U.N. delegates and civil society representatives from 167 countries as they adopted The New Urban Agenda. As part of our engagement, PWH published a research digest featuring the work of more than 45 Penn faculty members that was distributed at Habitat III to inform leading policymakers about the work of university scholars on relevant issues. To capitalize on the momentum of Habitat III back in Philadelphia, we convened a multistakeholder workshop, "Advancing The New Urban Agenda in a Shifting World" on Dec. 9, 2016. Engaging faculty members from a range of schools and disciplines, as well as journalists, government officials, think tank leaders, and other stakeholders, this workshop tackled difficult and practical questions about how best to inform, implement, and monitor The New Urban Agenda.

(Top Center) Perry World House convened a multistakeholder workshop less than two months following Habitat III in Quito, Ecuador, to examine questions on the implementation of the New Urban Agenda. (Top Right) Ian Klaus, former senior adviser for Global Cities, U.S. Department of State, and deputy negotiator for U.S. Delegation to Habitat III, participates in a conversation about improving urban governance. (Bottom Right) Kate Leader, program manager at Perry World House, presents her research on urban expansion at Habitat III.



(Left) Professor Marja Hoek-Smit, (Center) Provost Wendell Pritchett, and (Right) Professor Susan Wachter and Professor Eugenie Birch (left to right) serve as panelists at the workshop.

Global Order Policy Workshop: The U.S., China, and International Law

The U.S.-China relationship is quickly becoming a central driver of the evolution of the global order. The U.S., China, and International Law Project brings together leading scholars of international law from both the United States and China to explore the implications of a rising China for the largely U.S.-created international legal and institutional order. The group convened first at Perry World House in October 2016 and then again at the Penn Wharton China Center in Beijing in May 2017 to discuss issues including the law of the sea, trade and investment, rights, environmental law, and cybersecurity. Perry World House will publish a co-authored volume of paired chapters written by the U.S. and Chinese participants in the project. The end result will be a timely collection of cutting-edge, mutually engaged, interdisciplinary legal scholarship that addresses the areas of international law that are the most important areas of friction and potential cooperation between the U.S. and China. This collection will be the first of its kind.



Penn faculty gathered with Chinese scholars at the Penn Wharton China Center to examine the U.S.-China relationship through international law.



Global Order Policy Workshop: Emerging Technologies and Global Politics

Emerging technologies are reshaping the global order in unprecedented and understudied ways. Understanding the implications of these technological changes is a key aspect of The Future of the Global Order research theme. On March 23, 2017, a workshop on the topic brought together academics, policymakers, and the technology community. The workshop identified



related gaps in policy knowledge that could be filled through new, interdisciplinary research, disconnects between academics and policy-oriented approaches to the issues, and over-the-horizon challenges that require new work and thinking. Critical questions such as the impact of automation and robotics on the global economy, the ways in which cyber-security and cyberwarfare are changing political dynamics, and the role of artificial intelligence in national security were considered. A set of thought papers commissioned as part of the workshop will be released as a Perry World House white paper in fall 2017.

“Technology is changing the way we live our lives and is disrupting our service and manufacturing industry. These changes have already had significant geopolitical impact across the world. Perry World House gives Penn Engineering a unique forum to engage with thought leaders in social science, political science, law, and business in discussions at the intersection of technology and policymaking and the opportunity to create new educational and research programs on the Penn campus.”

- Vijay Kumar, Dean, School of Engineering and Applied Science

The World House Seminar Series

Convening interdisciplinary conversations around cutting-edge academic work is a core part of our mission. The World House Seminar Series, a weekly faculty seminar, is purposefully interdisciplinary and policy-oriented, with regular faculty and postdoctoral attendees from a wide range of schools, fields, and methodologies and presentations that speak to policy concerns. The series prioritizes scholarship related to our two inaugural research themes, Global Shifts and The Future of the Global Order.

Examples of seminar presentations during the 2016-2017 academic year illustrate the unique approach of the World House Seminar Series:

ENABLING EFFECTIVE GOVERNANCE: CONNECTING THE LOCAL TO THE GLOBAL

Eugenie L. Birch

Lawrence C. Nussdorf Professor of Urban Research & Education and Co-Director of the Penn Institute for Urban Research

THE BUILT ENVIRONMENT: STATE PRESENCE AT BORDER CROSSINGS IN THE MODERN WORLD

Beth Simmons

Andrea Mitchell University Professor of Law and Political Science, University of Pennsylvania

MILITARY POWER AND THE BRITTLINESS OF STATES IN ARAB TRANSITION

Yezid Sayigh

Senior Fellow at the Carnegie Middle East Center in Beirut

THE US, INDIA, AND GLOBAL POLITICS: A CONVERSATION WITH ARUN SINGH

Arun Singh

Former Ambassador of India to the United States and Distinguished International Fellow at Penn's Center for the Advanced Study of India

THE ROAD FROM THE PARIS CLIMATE AGREEMENT

Andrew Light

University Professor, George Mason University, and Senior Adviser and India Counselor to the U.S. Special Envoy on Climate Change (2013-16)

THE DEMOGRAPHIC LOGIC OF WAR, PEACE, AND POLITICS IN MULTI-ETHNIC STATES

Margarita Konaev

Postdoctoral Fellow, Perry World House

Visiting Fellows and Visiting Scholars

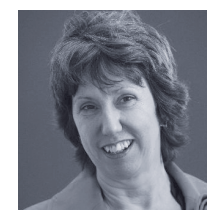
Connecting scholars, policymakers, and industry professionals with the students and faculty of the University of Pennsylvania around issues of critical global inquiry is a fundamental component of Perry World House's mission. The Visiting Fellows and Scholars Program enables these connections by bringing thought and policy leaders from around the world to Penn for visits ranging from a week to a semester.

In March 2017, PWH and the Brookings Institution established a groundbreaking partnership to bring former senior government officials to both institutions as visiting fellows and strengthen the relationship between Penn and the Washington, D.C. think tank community. The Perry World House - Brookings Institution Joint Visitors Program brought three visiting fellows to Penn during the spring 2017 semester and will bring several more in the years ahead. Perry World House seeks to partner with institutions within and beyond the University to identify leading thinkers for the Visiting Fellows Program.

2016- 2017 Visiting Fellows and Scholars:



JOCKIN ARPUTHAM, president of Shack/Slum Dwellers International (SDI) and president of the National Slum Dwellers Federation in India. Launched in 1996, SDI is a network of community-based organizations of the urban poor in 33 countries in Africa, Asia, and Latin America.



LADY CATHERINE ASHTON, a British Labour politician who served as the high representative of the Union for Foreign Affairs and Security Policy and first vice president of the European Commission in the Barroso Commission from 2009 to 2014. On Jan. 1, 2017, Ashton became the chancellor of the University of Warwick, succeeding Sir Richard Lambert and becoming the first female to hold this role at Warwick.



MICHAEL BOYLE (Visiting Scholar), an assistant professor of Political Science at La Salle University in Philadelphia. He was previously a lecturer in International Relations and a research fellow at the Centre for the Study of Terrorism and Political Violence at the University of St. Andrews. His research interests focus on terrorism and political violence, with particular reference to the strategic use of violence in insurgencies and civil wars.

Visiting Fellows and Visiting Scholars



TARUN CHHABRA (PWH-Brookings Fellow), director for strategic planning on the National Security Council from 2016 to 2017. Prior thereto, he was director for human rights and national security on the National Security Council, and from 2013 to 2015, he was a speechwriter for then-Defense Secretary Chuck Hagel.



BATHSHEBA "SHEBA" NELL CROCKER (PWH-Brookings Fellow), former U.S. assistant secretary of state for International Organization Affairs from 2014 to 2017. Crocker held other positions at the U.S. Department of State, including as a senior adviser to the secretary of state, principal deputy director in the Office of Policy Planning under Jake Sullivan, and chief of staff to Deputy Secretary of State James Steinberg.



ARAFAT JAMAL, head of the Inter-Agency Coordination Service at the United Nations High Commissioner for Refugees. Jamal is a senior United Nations diplomat with more than 20 years of international experience focused on leading in emergencies, managing operations, coordinating amongst agencies, resettling refugees, conducting humanitarian diplomacy, and formulating and evaluating policy.



BONNIE JENKINS (PWH-Brookings Fellow), formerly U.S. Department of State's coordinator for Threat Reduction Programs in the Bureau of International Security and Nonproliferation. She was also the U.S. representative to the G7 Global Partnership against the Spread of Weapons and Materials of Mass Destruction and chaired the Global Partnership in 2012.



AISA KIRABO KACYIRA, United Nations assistant secretary-general and deputy executive director of UN-Habitat. In this role, she provides critical leadership to promote sustainable cities and human settlements globally, engaging widely with governmental and nongovernmental actors.

Visiting Fellows and Visiting Scholars



IAN KLAUS, former senior adviser for global cities at the U.S. Department of State, where he was also the deputy negotiator for the Habitat III. In that role, he led the department's work at the nexus of urbanization and foreign policy and worked with cities around the world, from the Middle East to South America.



JACOB LIEF (C'99), founder and CEO of Ubuntu Education Fund, a nonprofit organization that provides comprehensive services to vulnerable children living in the townships of Port Elizabeth, South Africa, from cradle to career. Lief has been recognized by the World Economic Forum as a Young Global Leader and in 2009, was selected as an Aspen Institute Global Fellow.



SUSAN MARTIN (GR'72), the Donald G. Herzberg Professor Emerita of International Migration and the founder of the Institute for the Study of International Migration in the School of Foreign Service at Georgetown University. She currently serves as chair of the Thematic Working Group on Environmental Change and Migration in the Knowledge Partnership on Migration and Development in the World Bank.



SCOTT MULHAUSER (C'97), former chief of staff at the U.S. Embassy in Beijing. During a remarkable time in the U.S.-China relationship, he traveled to more than half of China's provinces as he helped run one of the largest and busiest posts in the world, including five consulates, 49 federal agencies, and more than 2,200 employees.



ANNE C. RICHARD, former U.S. assistant secretary of state for Population, Refugees, and Migration in the U.S. State Department from 2012 to 2017. Prior to her appointment, Richard was the vice president of government relations and advocacy for the International Rescue Committee and non-resident fellow of the Center for Transatlantic Relations at Johns Hopkins University School of Advanced International Studies.

Visiting Fellows and Visiting Scholars



ROBERT M. SCHER, former U.S. assistant secretary of defense for Strategy, Plans, and Capabilities. As the assistant secretary, Scher advised the secretary of defense and the undersecretary of defense for policy in areas including national security and defense strategy; the forces and contingency plans necessary to implement defense strategy; nuclear deterrence and missile defense policy; and security cooperation plans and policies.



DOMINIC "DOM" TIERNEY (Visiting Scholar), associate professor of political science at Swarthmore College, a senior fellow at the Foreign Policy Research Institute, and a contributing writer at *The Atlantic*. He completed his Ph.D. in international politics at Oxford University in 2003, and was a postdoctoral fellow at the Mershon Center at Ohio State University and the Olin Institute at Harvard University before coming to Swarthmore in 2005.



THOMAS WRIGHT, fellow and director of the Project on International Order and Strategy, as well as a fellow in the Center on the United States and Europe at the Brookings Institution. Wright works on U.S. foreign policy and grand strategy, Donald Trump's worldview, and the future of Europe and Asian security.



TOM WYLER (L'08), former counselor to the secretary of commerce and senior advisor for international economics at the Commerce Department's Office of Policy and Strategic Planning. Wyler's responsibilities included counseling the secretary of commerce on the full range of international economic policy issues before the Department.

Postdoctoral Fellowship Program

Perry World House fosters the careers of promising younger scholars working on policy-relevant global affairs topics linked to the Global Innovation Program's research themes. The Postdoctoral Fellows play an important role in advancing the research themes and contributing to the intellectual life of Perry World House during their year in residence.

Launched with an inaugural postdoctoral cohort in 2016-2017, the PWH Postdoctoral Fellowship Program attracts the very best early-career scholars from around the world focused on global, policy-relevant, interdisciplinary questions and has helped establish PWH's reputation as a leading global center for research and scholarship.



DANIEL E. AGBIBOA received his Ph.D. in International Development at Oxford University. As a postdoctoral fellow, his research focused on the micro-politics of urban transportation in Lagos, Nigeria's commercial capital and Africa's largest city. Agbiboa is now an assistant professor of public policy at George Mason University.



MARGARITA KONAEV holds a Ph.D. in Political Science from the University of Notre Dame. As a postdoctoral fellow, Konaev focused on turning her dissertation into a book manuscript, as well as completing a number of articles addressing the interface between global demographic shifts, specifically, urbanization, and the changing nature of warfare. Konaev is now a postdoctoral fellow at the Center for Strategic Studies at Tufts University.



JULIA MACDONALD holds a Ph.D. in Political Science from the George Washington University. During her year at Perry World House, Macdonald worked on turning her dissertation into a book manuscript, as well as completing a series of papers about the rise of unmanned weaponry. Macdonald is now an assistant professor at the University of Denver's Korb School of International Studies.



AARON ROCK-SINGER (C'07) received his Ph.D. from Princeton University's Department of Near Eastern Studies. As a postdoctoral fellow, Rock-Singer worked on preparing a book, based partially on his dissertation, that charts the rise of the "Islamic Revival" in Egypt during the past 40 years. Rock-Singer is now a visiting assistant professor in Near Eastern Studies at Cornell University.

> The Building

A new, state-of-the-art building at the center of Penn's campus, Perry World House is uniquely positioned to convene world leaders, cutting-edge practitioners, and top intellectuals engaged on vital global issues. The building is designed to express a world view of connectivity, advancement, modernism, and transparency. It is light, airy, and inviting. Lines of sight cut across the building, drawing visitors into new discussions or encouraging the more reluctant observer to join a conversation. The World Forum, the premier event space in PWH, grounds the building and is the focal area around which everything else is built. It has been used to host some of the most significant meetings at Penn this past year. All rooms have an abundance of natural light and the latest technologies. Spaces are intentionally designed to facilitate varying levels of engagement: small, intimate discussions; open policy labs; large public talks; office hours with visitors; study breaks; and postdoctoral collaboration, among others.

Our five spaces, which include the World Forum, the Class of 1991 Student Lounge, the Global Policy Lab, the Conference Room, and the Classroom, accommodate events, colloquia, and meetings. Each space offers a variety of configurations to serve a wide range of programming needs.

Thanks to the generosity of Lisa and Richard Perry, the walls of the building are a gallery for modern art and photography from around the world that complements and reflects our mission. While listening to a conference session or sipping coffee with a colleague, the visitor to Perry World House is challenged to identify the demilitarized zone between North and South Korea in a powerful photographic image or to experience urbanization in Nanjing, China, through a remarkable artistic interpretation.



“Penn Nursing’s collaboration with Perry World House has strengthened the global engagement of our students and faculty on campus and around the world. Collaboration with PWH has also amplified the voice of nursing and its leadership contributions to global health on campus and around the world.”

– Antonia Villarruel
Dean, School of Nursing

➤ Perry World House as a Public Forum and Convening Nexus

Beyond the wealth of programming undertaken by Perry World House, PWH is also a striking, versatile public space at the center of Penn's campus open to the university community to convene and connect.

Perry World House has quickly become a premiere venue for globally oriented public engagement. Our architecturally powerful and functionally flexible space allows for a range of programs and partnerships, facilitating high-level visits to Penn and the hosting of distinguished events and speakers. In 2016-2017, highlights included hosting the premier foreign policy side event during the Democratic National Convention; welcoming the President of Mongolia; holding a dinner discussion with former Secretary of State Madeline Albright and former National Security Advisor Stephen Hadley; providing a venue for an international student graduation reception; screening films about global affairs; and offering countless student groups and organizations meeting space.



➤ A Convening Space for the Penn Community Through Co-Sponsorship

Collaboration across Penn and co-sponsorship of events and activities with schools, research centers, programs, and student organizations is essential to our outreach mission and to catalyzing interdisciplinary conversations across Penn's campus. In our first year, Perry World House partnered on events with faculty from 11 of Penn's 12 schools and served students from across the entire campus to organize and host a range of events, including:

- A lecture co-hosted by the Wharton School and The Lauder Institute, with the ambassador of France to the United States, Gérard Araud, two days after the first round of the 2017 French presidential election.
- A panel event, "Counterterrorism and Cybersecurity with Richard Clarke and Malcolm Nance," co-hosted by the Annenberg Center and the American Academy of Political and Social Science.
- The Europe on the Rocks Speaker series co-hosted with the Slavic Languages and Literature department.
- The Inaugural Penn Global Week, a series of events celebrating Penn's global community and engagement.



A joint program, "Safeguarding Africa's Future: African Leaders on Sustainable Development and Urbanization," co-hosted with Eisenhower Fellows and Penn's Africana Studies department.



A collaboration with Penn's School of Arts & Sciences to invite Mongolian President Tsakhiagiin Elbegdorj to give a talk, "Mongolia, Oasis of Democracy: The Path from Closed to Open Society".

An event organized in collaboration with The Unison Network, CAP Action, The National Security Leadership Alliance, The Truman National Security Project, and Third Way on "The National Security Election: What's at Stake in 2016 and Beyond." Panelists included, among others, Madeleine Albright, former secretary of state; Leon Panetta, former secretary of defense; Tom Donilon, former national security advisor; Rajiv Shah, former administrator of USAID; Representative Seth Moulton, Massachusetts 6th District; and Wendy Sherman, senior counselor at the Albright Stonebridge Group and senior fellow at the Belfer Center.



"I am very proud of the close relationship between Penn Law and Perry World House and the exceptional job our law faculty member Bill Burke-White has done in building PWH's programming during the past year. These are exciting and uncertain times for our global legal order, and Bill and his colleagues at PWH are asking the right questions and pointing the way to solutions. I am pleased that so many of our law faculty experts and law students are engaging with these issues at both the law school and PWH."

- Theodore Ruger, Dean, Penn Law

International Visitors Grant Program

While Perry World House brings exceptional visitors from around the world to Penn through our Visiting Fellows and Scholars program (discussed earlier), we also support Penn faculty, research centers, and programs that bring global voices and expertise to Penn for their own conferences, workshops, or other programs. The International Visitors Grant Program provides limited financial support to faculty and student organizations to bring academics, thought leaders, and policymakers from abroad who deepen Penn's global connections.

The PWH International Visitors Grant Program has helped, for example:

- Penn Law to bring a world-renowned judge from the International Court of Justice to Penn to discuss international criminal prosecutions and the necessity of international courts.
- The Wharton School's Southeast Asia Club to bring policymakers together at their conference to explore Asia's increasing role in geopolitical developments and U.S.-ASEAN relations.
- The Annenberg School for Communication to bring scholars to examine the global refugee crisis through an analysis of the social life of objects left behind by present-day migrants and rescuers in the European border zone.
- The Graduate School of Education to bring together experts to explore how to expand learning for the most disadvantaged communities across the globe as related to the post-2015 U.N. Development Goals.
- The Center for the Advanced Study of India to bring together a transatlantic research network of scholars working in migration and cognitive sciences to advance understanding of the cognitive impacts of migration.



Preparing Penn Students to be Engaged Global Citizens

Perry World House prepares Penn students to become global citizens who think critically about the world, global challenges, and the connections between those global challenges and their academic studies. Whether for an engineering student looking to expand her knowledge of sustainable urbanization or a political science major seeking expert opinions about North Korea's nuclear capabilities, PWH aims to be an accessible, inviting, and stimulating home for international inquiry. Perry World House engages students both through broadly targeted programming designed to reach a large segment of the Penn student population and through deep enrichment opportunities for a smaller group of students more directly focused on global affairs.



The World House Student Fellows Program

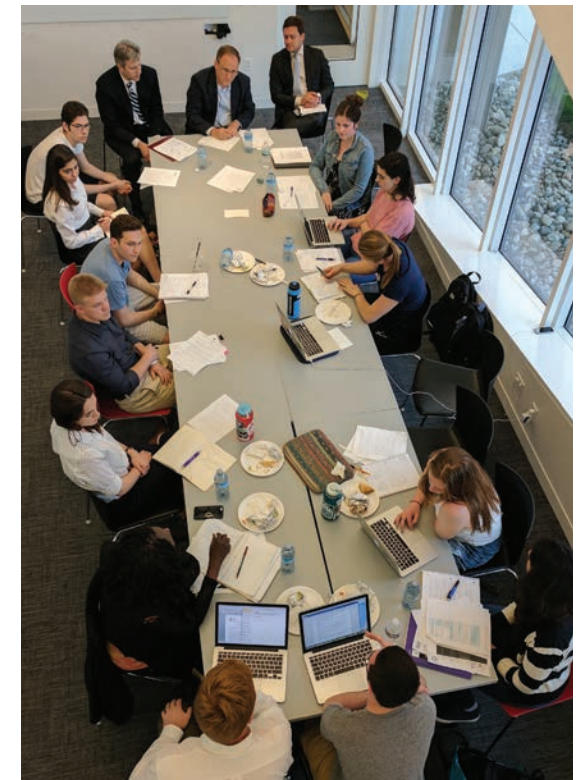
The World House Student Fellows (WHSF) Program is PWH's deep engagement program designed for students interested in pursuing a career directly or indirectly in global policy and international affairs. This co-curricular program is intended for undergraduate students from across the University and provides exposure to the work of PWH, opportunities for career exploration and mentorship, policy-relevant research engagement, and support for internships in global policy. Twenty-five undergraduates with representation from all four of Penn's undergraduate schools (College, Engineering, Nursing, and Wharton) composed our inaugural cohort in 2016-2017.



(Top Center) World House Student fellows at their end-of-year celebration. (Bottom Left) WHSF work in groups during one of their weekly policy seminars. (Bottom Center) The World House Student Fellows from 2016-2017 welcome the incoming cohort of WHSF. (Bottom Right) World House Student Fellow Andrew Parsons speaks at a PWH event.

The World House Student Fellows Program offers:

- Experience completing the yearlong Fellows Policy Project:** Student fellows work in teams under the direction of PWH-affiliated faculty and staff to develop a policy-relevant research question linked to the themes of the Global Innovation Program and then to undertake research and interviews to answer that question. At the end of the academic year, each team presents its work to appropriate experts, including Visiting Fellows, other policymakers, faculty, and scholars. The Fellows Policy Projects for 2016-2017 focused on:
 - leveraging humanitarian technology in the refugee crisis
 - cybersecurity and cyberwarfare: policy and regulatory options
 - increasing women's political participation
 - urban labor integration of displaced persons
 - foreign policy responses to regional development banks
- Unique access to faculty and visitors:** Student fellows explore and analyze pressing global issues in regular seminars facilitated by PWH faculty, staff, and visitors. These seminars also teach students skills to translate research into policy-relevant output. All student fellows learn how to produce and publish products aimed at influencing government, international, and non-governmental organizations, and policy communities in the U.S. and around the world.
- Research and career mentorship:** Student fellows receive research guidance and career mentorship from affiliated faculty, visiting scholars, postdocs, or other distinguished visitors.
- Enrichment trips:** In February 2017, the PWH senior leadership team accompanied the student fellows to Washington, D.C., for a series of enrichment meetings at the Department of State, the Department of Defense, Human Rights Watch, and the Brookings Institution.
- Global policy internship or thesis research support:** Student fellows are eligible to apply for funding to support globally oriented, policy-relevant internships or thesis research during the summer before their senior year. In summer 2017, Perry World House awarded four students summer funding. Three received \$3,500 each for summer internships related to global affairs in Washington, D.C. and New York City, including at Human Rights Watch. The fourth received \$2,000 to present academic research on global affairs at a conference in Poland.



General Student Programming

Becoming a home for international students and students with international interests

Perry World House hosts two ongoing series that are open to the entire Penn community. Both programs are designed to address timely global issues in an inclusive setting.

- **Rapid Response Programs** examine fast-breaking foreign affairs developments in real time through speakers, panels, and seminars or by providing an open forum for student-led conversation. They occur within a few days of major breaking news events. A Rapid Response Program held two days after Donald Trump's election drew more than 100 students to discuss the new Administration's likely approach to U.S. foreign policy with leading experts.
- **The World Today** is a weekly, one-hour intimate conversation about a timely global policy issue with a leading foreign policy scholar or policymaker. This past year, featured guests included Ambassador Arun K. Singh, former ambassador of India to the United States, and Jockin Arputham, president of Slum/Shack Dwellers International.

Exposing students to a world of career opportunities

In fall 2016, Perry World House held its first annual Global Career Week, a series of events and panels focused on the wide range of internationally oriented potential

career tracks for Penn undergraduates. Events included a panel with foreign policy and military officials, a lunch with Justice Patrick Robinson of the International Court of Justice, a conversation with Jacob Lief (C'99), founder of an education nonprofit in South Africa, and a panel on opportunities in technology and foreign affairs with recent alumni.

Simulating the Complexity of Policy Decisions

Policy simulations and roll playing allow students to experience the many pressures and variables that make policy so complex. This past year, PWH hosted three policy simulations for students on topics including counter-ISIS strategy and humanitarian intervention in Haiti.



Connecting across Penn through our House Committee

The House Committee is a student advisory group composed of undergraduate and graduate leaders from internationally oriented and campus-wide organizations. These representatives share insights about the international interests and priorities of the student body, which has helped Perry World House refine its student programming. In 2016-2017, the organizations represented on the House Committee were:

- Assembly of International Students
- Graduate and Professional Student Assembly
- Global Health Society
- Global Surgery Interest Group
- Huntsman Program
- International Affairs Association
- International Educational Development Program
- International Human Rights Advocates
- International Student Advisory Board
- International Relations Undergraduate Student Association
- Lauder Advisory Council
- Nursing Students for Global Health
- Penn Diplomacy and Policy Council
- Penn International Impact Consulting
- Penn Political Coalition
- Undergraduate Assembly
- Penn Society for International Development
- Penn World Scholars
- Pi Sigma Alpha Political Science Honor Society
- Student Committee on Undergraduate Education
- Social Impact Advisory Board
- Social Work Advocates for Immigrant Rights
- Engineers Without Borders

Reflecting on Culture through a Global Lens

The Global Lens Series, jointly hosted by PWH and International Students and Scholar Services, offers programming with a cultural focus. Whether a foreign film, dance lesson, open-mic night for poetry and readings, or international food festival, this program series reflects PWH's commitment to fostering a dynamic cultural hub for all Penn students.



Students take a selfie with the President of Mongolia

“PWH bolstered the idea and image of a ‘global Penn.’ It’s a point of pride and a campus home for students of international studies.”

- William Slotznick (C'17)

The Perry World House Research Fellowship

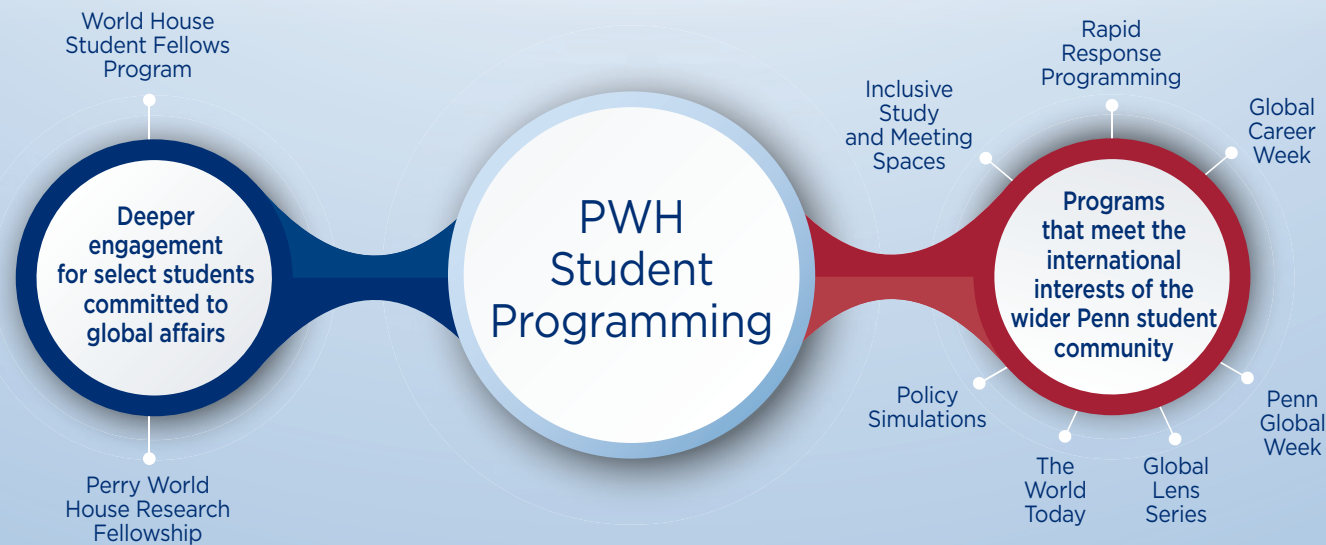
The Perry World House Research Fellowship is a one-year fellowship designed for a recent graduate who has shown a deep commitment to, and interest in, global affairs and aspires to pursue a career in international policy. The research fellow serves as a full-time member of the PWH team, contributing to its intellectual output, including projects within the Global Innovation Program, the WHSF program, and related administrative work.



Perry World House's inaugural Research Fellow, Stephanie Herrmann (C'16).

“The mentorship that I received while working on projects within and across Perry World House’s two research themes sparked my interest in the connection between international development and international justice. I want to be a human rights lawyer and will continue to study the connection between law and development at LSE this fall.”

– Stephanie Herrmann



Partnering with Philadelphia’s Academic and Policy Communities

Though globally focused, Perry World House embraces Philadelphia as our home and recognizes that linkages between local and global are critical to addressing international challenges today. To that end, PWH advances global inquiry in part by building roots here in Philadelphia. Local partnerships are central to our mission and effectiveness. During the past year, we have launched locally based partnerships and events with organizations including the Foreign Policy Research Institute, the Consular Corps Association of Philadelphia, Al-Bustan’s Seeds of Culture, and Eisenhower Fellowships, and have hosted visiting scholars from LaSalle University and Swarthmore College.



Looking Ahead: 2017-18 and Beyond

The first year of operation at Perry World House was an exciting one, opening the building, launching the Global Innovation Program, engaging core constituencies, and initiating our student programs. Going forward, we will continue to experiment and innovate, measuring the impact of our programs and finding ways to best advance our core mission. The year ahead will be one of both consolidating and improving our existing programs and activities, as well as launching a select group of new initiatives.

Launching a Graduate Student Fellows Program

In 2017-2018, PWH will launch a Graduate Student Fellows Program for students interested in global affairs and whose research overlaps to some extent with the themes of the Global Innovation Program. Our new program will be tailored to the distinct needs, goals, and time horizons of different graduate programs and provide limited funding to these fellows to conduct research and offer the possibility of authoring working papers linked to the student's own research and a Global Innovation Program theme.

Forging New External Partnerships

As we look ahead, PWH is committed to deepening its existing strategic partnerships as well as cultivating new ones. The PWH-Brookings Partnership launched in 2017 is an important step in this direction, and we look forward to exploring and building relationships with other institutions. During the 2017-2018 academic year, PWH is particularly focused on deepening our engagement with other academic institutes focused on "bridging the gap" between academia and policy, multilateral institutions and academics and policy think tanks in the Global South.

Expanding the Postdoctoral Fellowship Program

For the academic year 2017-2018, PWH is expanding its Postdoctoral Fellows Program. In addition to four postdoctoral fellows focusing on the Global Innovation Program research themes, PWH will also support three postdoctoral fellows working on Beth Simmons' Borders and Boundaries Project.



Collaborating with the Penn Biden Center

In spring 2017, President Gutmann announced that Vice President Joseph Biden would join the University of Pennsylvania as the Benjamin Franklin Presidential Practice Professor and lead the new Penn Biden Center for Diplomacy and Global Engagement. PWH is a crucial partner in these efforts and serves as a bridge between the Penn Biden Center in Washington, D.C., and the broader Penn community in Philadelphia. To facilitate a close working relationship between the two, the Penn Provost designated PWH Inaugural Director William Burke-White as the academic liaison for the Penn Biden Center, tasked with generating sustained connections between the institutions.

“At Penn, I look forward to building on the work that has been a central pillar of my career in public office: promoting and protecting the post-WWII international order that keeps the United States safe and strong. The Penn Biden Center and I will be engaging with Penn’s wonderful students while partnering with its eminent faculty and global centers to convene world leaders, develop and advance smart policy, and impact the national debate about how America can continue to lead in the 21st century.”

– Vice President Joseph R. Biden, Jr.
Benjamin Franklin Presidential Practice Professor

Looking Ahead: 2017-18 and Beyond



Piloting a New Project: Borders and Boundaries

Starting in the fall of 2017, Penn Integrates Knowledge professor Beth Simmons will pilot the Borders and Boundaries Project under the Global Innovation Program's Global Shifts research theme. This project will explore boundaries between organized human communities, including international borders, border regions, and border crossings. These borders have multiple repercussions as designations of state authority, security buffers, expressions of social meaning, markers of economic separation, and opportunities for economic integration.



ACKNOWLEDGEMENTS

This report was made possible by the work and dedication of the entire Perry World House staff. Particular thanks goes to Laurie Jensen, former program coordinator, who guided this report through critical phases. Additional thanks goes to Kate Leader, the Global Shifts program manager, for her leadership in finalizing and bringing the report to publication.

A number of people from the Penn community gave their time to provide insightful comments on drafts of the report. We thank Executive Director of Penn Global Amy Gadsden, Associate Provost for Administration Lynne Hunter, and Senior Philanthropic Advisor Linda Kronfeld.

Perry World House is especially grateful to the leadership of the University of Pennsylvania for its unwavering commitment to our mission, in particular President Amy Gutmann, Provost Wendell Pritchett, Vice Provost for Global Initiatives Zeke Emanuel, and Executive Director of Penn Global Amy Gadsden.

Without the extraordinary support of Lisa and Richard Perry, the work represented in this report would not have been possible. We are forever grateful to them not only for their financial support but also for their deep engagement.

This annual report was designed by Monica Gilbert of 7ate9 Design.

Perry World House Staff

William Burke-White
Faculty Director

Michael Horowitz
Associate Director

LaShawn R. Jefferson
Deputy Director

Itai Barsade
Research Fellow

Lisa Jourdan
Operations and Event Manager

Katelyn Leader
Program Manager

Ashley Napier
Assistant to the Director

Debbie Rech
Visitor Coordinator

Brian Yansak
Administrative Coordinator



PERRY
WORLD
HOUSE

UNIVERSITY of PENNSYLVANIA

