

PERRY WORLD HOUSE

IS A CENTER FOR SCHOLARLY INQUIRY,
TEACHING, RESEARCH, INTERNATIONAL EXCHANGE,
POLICY ENGAGEMENT, **AND** PUBLIC OUTREACH ON PRESSING
GLOBAL ISSUES. LOCATED IN THE HEART OF THE **PENN** CAMPUS

AT 38TH STREET AND LOCUST WALK, IT DRAWS ON THE EXPERTISE
OF PENN'S 12 SCHOOLS AND NUMEROUS GLOBALLY-ORIENTED RESEARCH
CENTERS TO EDUCATE THE PENN COMMUNITY AND PREPARE STUDENTS TO BE
WELL-INFORMED, CONTRIBUTING GLOBAL CITIZENS. AT THE SAME TIME, PERRY

BRINGING
THE WORLD
TO PENN

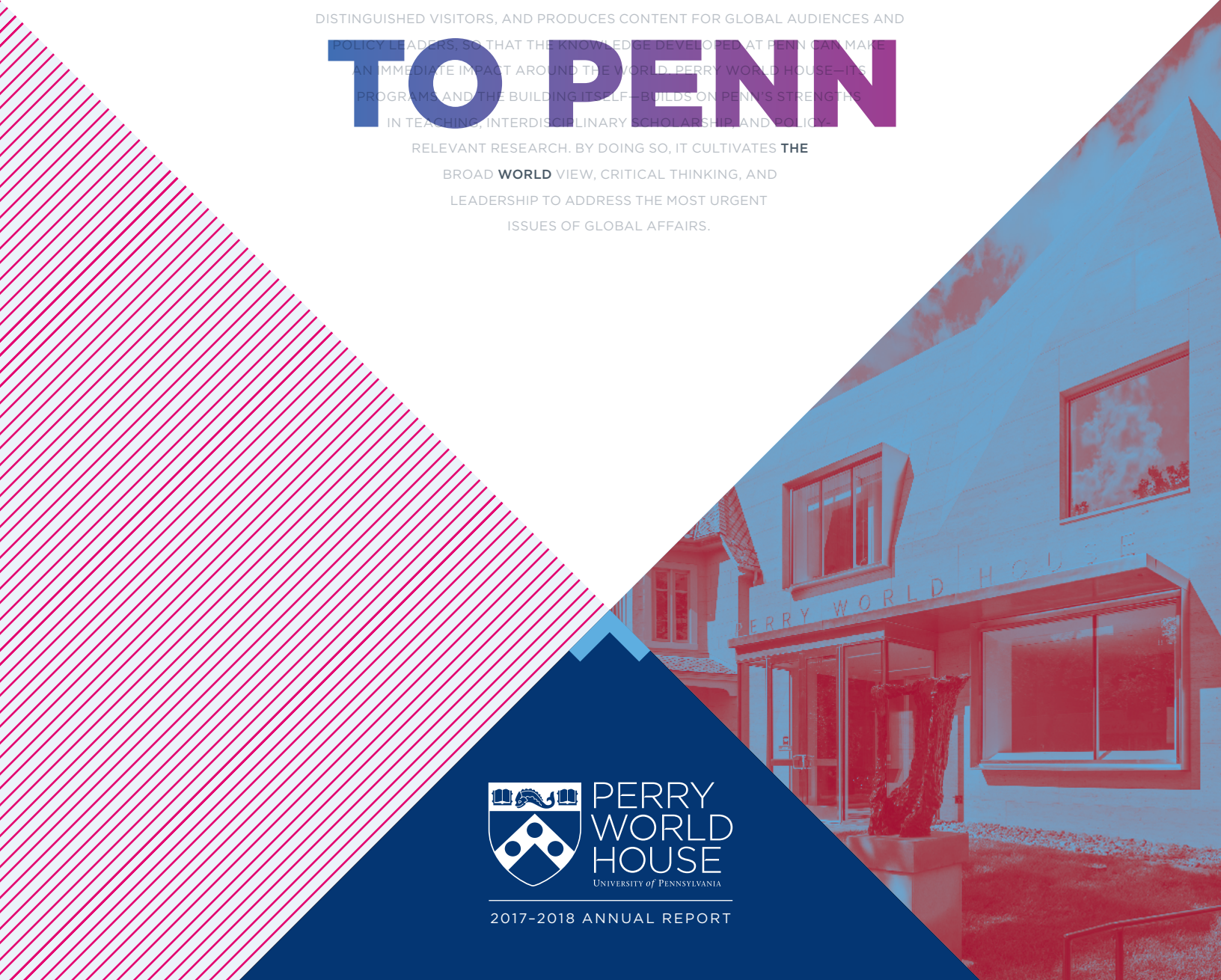
WORLD HOUSE CONNECTS PENN **TO** LEADING POLICY EXPERTS FROM AROUND THE
WORLD TO DEVELOP AND ADVANCE INNOVATIVE POLICY PROPOSALS. THROUGH ITS
RICH PROGRAMMING, PERRY WORLD HOUSE FACILITATES CRITICAL CONVERSATIONS
ABOUT GLOBAL POLICY CHALLENGES AND FOSTERS INTERDISCIPLINARY RESEARCH
ON THESE TOPICS. IT PRESENTS WORKSHOPS AND COLLOQUIA, WELCOMES
DISTINGUISHED VISITORS, AND PRODUCES CONTENT FOR GLOBAL AUDIENCES AND
POLICY LEADERS, SO THAT THE KNOWLEDGE DEVELOPED AT PENN CAN MAKE
AN IMMEDIATE IMPACT AROUND THE WORLD. PERRY WORLD HOUSE—ITS
PROGRAMS AND THE BUILDING ITSELF—BUILDS ON PENN'S STRENGTHS
IN TEACHING, INTERDISCIPLINARY SCHOLARSHIP, AND POLICY

RELEVANT RESEARCH. BY DOING SO, IT CULTIVATES **THE**
BROAD **WORLD** VIEW, CRITICAL THINKING, AND
LEADERSHIP TO ADDRESS THE MOST URGENT
ISSUES OF GLOBAL AFFAIRS.



**PERRY
WORLD
HOUSE**
UNIVERSITY OF PENNSYLVANIA

2017-2018 ANNUAL REPORT



CONTENTS

3
ABOUT PERRY
WORLD HOUSE

4
MESSAGE FROM
THE PRESIDENT

6
MESSAGE FROM
THE PROVOST

8
MESSAGE FROM
THE DIRECTOR

10
BRINGING
THE WORLD
TO PENN

12
THE GLOBAL
INNOVATION
PROGRAM

14
THE FUTURE OF
THE GLOBAL
ORDER: POWER,
TECHNOLOGY
& GOVERNANCE

18
GLOBAL SHIFTS:
URBANIZATION,
MIGRATION &
DEMOGRAPHY

24
PWH SEMINAR
SERIES

25
*THE
GLOBAL
CABLE
PODCAST*

26
VISITING
FELLOWS
& VISITING
SCHOLARS

30
POSTDOCTORAL
FELLOWS

32
THE GLOBAL
EXPLORATION
PROGRAM

34
WORLD HOUSE
STUDENT FELLOWS
PROGRAM

38
GRADUATE
ASSOCIATES

39
GENERAL STUDENT
PROGRAMMING

42
THE PERRY WORLD
HOUSE RESEARCH
FELLOWSHIP

44
PARTNERSHIPS

46
PARTNERING
WITH THE PENN
COMMUNITY

50
PARTNERING WITH
THE PHILADELPHIA
COMMUNITY

51
INTERNATIONAL
VISITORS GRANT
PROGRAM

52
A GLOBAL HUB ON
PENN'S CAMPUS

54
LOOKING AHEAD:
2018-2019
& BEYOND

56
DONORS
& SUPPORT

58
SENIOR
LEADERSHIP
& STAFF

About Perry World House

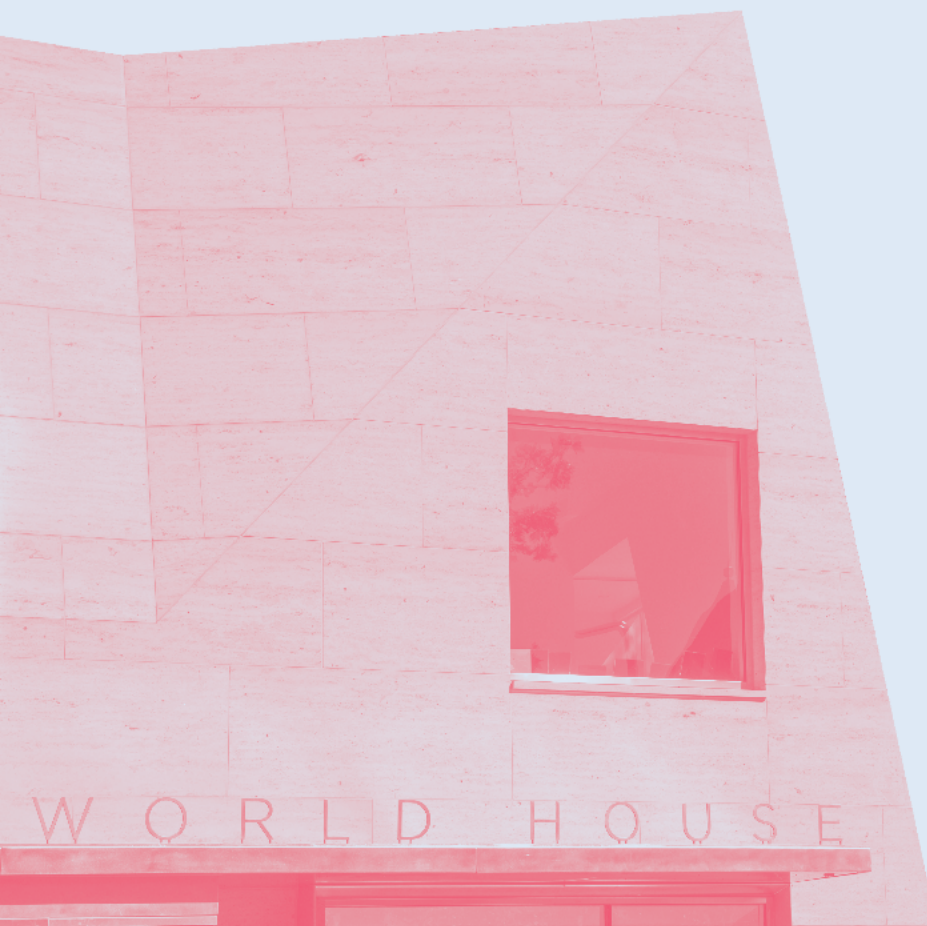


PERRY WORLD HOUSE'S MISSION IS TO BRING THE ACADEMIC KNOWLEDGE OF THE UNIVERSITY OF PENNSYLVANIA TO BEAR ON SOME OF THE WORLD'S MOST PRESSING GLOBAL POLICY CHALLENGES AND TO FOSTER INTERNATIONAL POLICY ENGAGEMENT WITHIN AND BEYOND THE PENN COMMUNITY.

Perry World House is a center for scholarly inquiry, academic research, international exchange, policy engagement, and public outreach on global policy issues. Located in the heart of Penn's campus at 38th Street and Locust Walk, it draws on the expertise of the University's 12 schools and numerous globally oriented research centers to connect Penn with leading experts from around the world to develop and advance innovative policy proposals. At the same time, Perry World House seeks to educate the Penn community and to prepare students for an increasingly globalized society.

Through its rich programming, Perry World House galvanizes critical conversations about global policy challenges and fosters interdisciplinary research on them. It convenes workshops and colloquia, welcomes distinguished visitors, and produces content for global audiences and policy leaders, so that the knowledge developed at Penn can make an impact around the world.

Perry World House—its programs and the building itself—builds on Penn's strengths in teaching, interdisciplinary scholarship, and policy-relevant research. By doing so, it cultivates the broad worldview, critical thinking, and leadership required to address some of the most urgent issues of global affairs.





AMY GUTMANN

*President, University
of Pennsylvania*

*Christopher H. Browne
Distinguished Professor of Political
Science, School of Arts and Sciences*

*Professor of Communication,
Annenberg School for
Communication*

**MESSAGE
FROM
THE
PRESIDENT**

“AMONG THE GREATEST WORK
PENN UNDERTAKES IS THAT
WHICH IMPROVES THE WORLD.
I AND THE ENTIRE PENN
COMMUNITY CANNOT IMAGINE
UNDERTAKING THAT WORK
WITHOUT OUR INVALUABLE
PERRY WORLD HOUSE.”

Dear Friends,

The surest sign that something is a success is when you can't imagine going forward without it. This is the defining mark of Perry World House, Penn's vital nexus of global activities and outreach. In the space of just two short years, Perry World House has helped enrich and broaden the life of our campus by truly bringing the world to Penn. It serves as a powerful catalyst for global activity for our students and faculty and as a beacon of cultural interchange and meaningful engagement across political divides.

What great things we've seen in such a short time! This past year, I was honored to welcome Benjamin Franklin Presidential Practice Professor Joe Biden to a fascinating discussion with former President of Mexico Felipe Calderón at the inaugural Penn Biden Leaders dialogue held in Irvine Auditorium. We are especially pleased that President Calderón will be a Distinguished Global Leader with us this fall.

The talents and resources of the Perry World House were evident as well at the 2018 Silfen Forum, which addressed an international issue of growing critical importance: *People and Policy Adrift: A 21st Century Framework for Asylum Seekers, Refugees, and Immigration Policy*. The Penn community enjoyed a truly distinguished panel of deep thinkers and policy innovators, including the Honorable Jeb Bush and former Assistant Secretary of State Anne C. Richard, a Perry World House Visiting Fellow.

The year ahead promises to be even more vital and engaging, with distinguished global leaders and visiting fellows who will bring to our campus an enormous breadth of experience and depth of understanding on some of the most challenging and urgent issues of our time. Among the greatest work Penn undertakes is that which improves the world. I and the entire Penn community cannot imagine undertaking that work without our invaluable Perry World House.

Sincerely,



AMY GUTMANN

President, University of Pennsylvania





WENDELL PRITCHETT

Provost, University of Pennsylvania

*Presidential Professor of Law
and Education, University of
Pennsylvania*



**MESSAGE
FROM
THE
PROVOST**

“PERRY WORLD HOUSE, IN
JUST TWO YEARS, HAS BECOME
AN ESSENTIAL CATALYST FOR
SOME OF THE MOST IMPORTANT
GLOBAL DIALOGUES, BOTH
HERE ON CAMPUS AND
AROUND THE WORLD.”

Dear Friends,

In April, to name just one example, I was honored to introduce Zeid Ra'ad Al Hussein, the U.N. High Commissioner for Human Rights at that time, as the keynote speaker of this year's Global Shifts Colloquium. This event epitomized the approach that PWH brings to all of its work. It brought together a range of leading writers, scholars, and policymakers to collectively consider one of the most urgent global issues—international migration and refugees—with a focus on practical solutions that span institutional change, policy reform, and the role of the media.

This interdisciplinary scope has become the hallmark of Perry World House's contribution to global dialogue. This year, Carnegie Corporation of New York recognized this work with a major two-year grant designed specifically to help the Global Innovation Program continue to build bridges between scholars and policymakers. In particular, it will support new media platforms that help these ideas reach a wider audience and inspire broader change around the world.

At the same time, Perry World House continues to bring major world leaders to Penn, from former UNESCO Director-General Irina Bokova and former Assistant

Secretary of Defense Robert Scher in the past year to former President of Mexico Felipe Calderón and former National Security Advisors H.R. McMaster and Susan Rice in the year ahead. This year also saw the first writer-in-residence co-sponsored with Kelly Writers House, Perry World House's neighbor on Locust Walk: the Russian journalist Yevgenia Albats, who brought her invaluable perspective on contemporary Russian life to both public events and visits to Penn classes.

We could not be prouder of this essential work being done at Perry World House, at a time when the world needs it more than ever. We look forward to another year of exciting accomplishments ahead.

Sincerely,

WENDELL PRITCHETT

Provost, University of Pennsylvania





WILLIAM BURKE-WHITE

*Inaugural Director, Perry World House
Richard Perry Professor,
University of Pennsylvania*

**MESSAGE
FROM
THE
DIRECTOR**

“A KEY PART OF THE PERRY WORLD HOUSE MODEL IS TO BRING THE WORLD TO PENN BY HOSTING SIGNIFICANT POLICY FIGURES—GLOBAL THINKERS AND DOERS WHO HAVE MADE REAL IMPACT IN THEIR CAREERS—TO WORK CLOSELY WITH OUR STUDENTS AND FACULTY. THIS ANNUAL REPORT SHOWS HOW WE HAVE BUILT OUR VISITORS PROGRAM TO MAXIMIZE THEIR IMPACT ON CAMPUS AND CONNECT PENN TO KEY POLICY DEBATES.”

Dear Friends,

I write this letter on a flight back to Philadelphia from Beijing, reminded that Perry World House's mission has never been more important or timely. Perry World House has two main objectives: to foster international policy engagement within and beyond the Penn community and to bring Penn's academic knowledge to bear on some of the most pressing global policy challenges of our time.

In Beijing, we convened a series of roundtable discussions with Penn faculty, Chinese counterparts, and policy makers from both sides of the Pacific on the future of U.S.–China relations and its impact on the global order. At a moment when trade tariffs threaten to disrupt the international economic system, when conflicts loom in the South China Sea, and when domestic politics in both countries clouds the relationship, meetings such as these offer a path to understanding, engagement, and, perhaps, improved relations and strengthened institutions.

In our second year, Perry World House transitioned from being a brand new institution to a significant fixture at Penn and in the policy world. To do so, Perry World House had three main goals during 2017–2018: (1) to bring the world to Penn, (2) to deepen and broaden our engagement with the Penn community, and (3) to build our capacity for policy impact. We made significant advances on each of these goals and, hopefully, made Penn more interesting, exciting, and impactful in the process.

A key part of the Perry World House model is to bring the world to Penn by hosting significant policy figures—global thinkers and doers who have made real impact in their careers—to work closely with our students and faculty. This annual report shows how we have built our visitors program to maximize their impact on campus and connect Penn to key policy debates. Policy visitors like Russian investigative journalist Yevgenia Albats and former Assistant U.S. Secretary of State for Population, Refugees, and Migration Anne Richard inform conversations at Penn, partner with faculty in research and writing projects, guest lecture in classes, host study groups, and hold office hours with Penn students. I hope you have gotten to know some of our visitors this past year.

This year, Perry World House has also been committed to deepening and expanding our engagement with the Penn community. The annual report highlights the range of partnerships PWH has developed with individual faculty, student groups, programs and centers, departments, and schools. From our International Visitors Grant Program to partnered experts workshops, from providing space and facilities for others at Perry World House to developing joint research projects, we have worked closely and deeply across the Penn community, helping others achieve their goals as we bring Penn's knowledge to bear on critical global issues and collectively raise Penn's global profile.

Finally, this has been a year dedicated to building our capacity for policy impact. Again, this report shows how Perry World House is facilitating Penn's policy impact, connecting our academic community with the debates and policy proposals that matter in global affairs. From the aforementioned roundtables in Beijing to the release of a series of white papers on sustainable urban development at the United Nations World Urban Forum in Kuala Lumpur (jointly with the Penn Institute for Urban Research and the Kleinman Center for Energy Policy), Perry World House has identified targeted opportunities to leverage Penn's academic research to shape global policy. Through workshops and colloquia on Penn's campus, made possible by a significant grant from Carnegie Corporation of New York, we have brought together academics and policymakers around critical global policy issues ranging from the reform of the international refugee system to the implications of populism and nationalism on the global order.

Thank you all for being partners with us on this wondrous journey and making year two of Perry World House such a success. We look forward to working with you on all that we will accomplish in the year ahead.

With Best Wishes,



WILLIAM BURKE-WHITE

*Richard Perry Professor and Inaugural Director,
Perry World House*

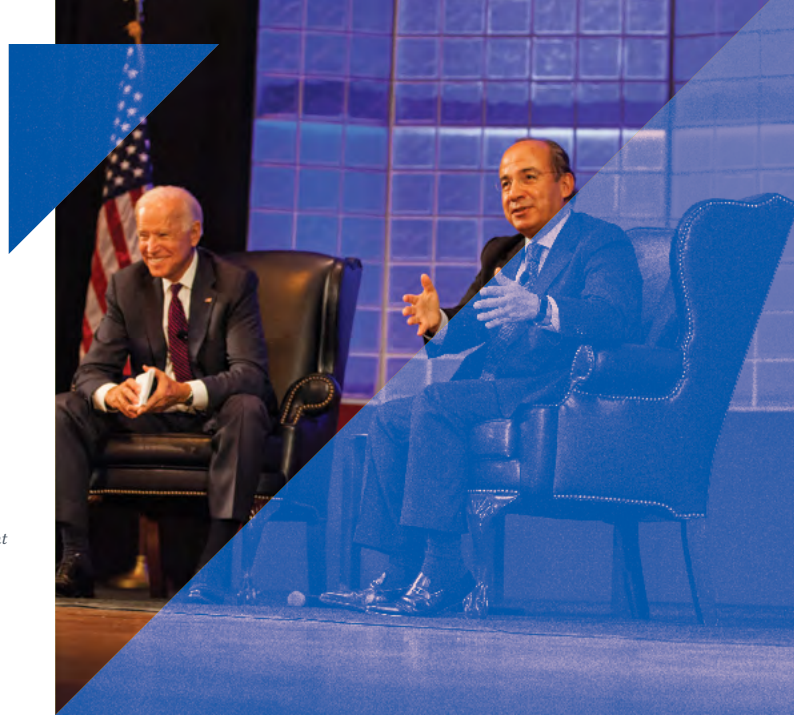
Bringing the World to Penn

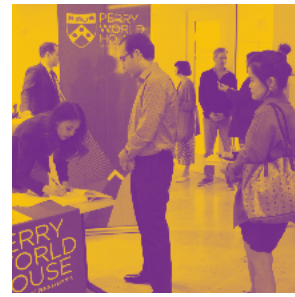


Through a robust program of visiting fellow and scholars, colloquia and workshops, distinguished global leaders and weekly intimate conversations, podcasts and global cultural programming, we attract leading academics, thought leaders, and practitioners from the global stage. With them, we provide remarkable opportunities to Penn faculty, students, and other constituencies across the university to shape, connect around, and engage with critical global policy issues.

Right: 47th Vice President of the United States Joe Biden in conversation with former President of Mexico Felipe Calderón.

Below: Geoff Garrett, Dean of The Wharton School, in conversation with Andrew Liveris, then Chairman and Chief Executive Officer of The Dow Chemical Company.





Clockwise from top left: PWH Visiting Fellow Aisa Kirabo Kacyira, Assistant Secretary-General and Deputy Executive Director of U.N. Habitat, speaks on a panel at a Global Shifts workshop; Amy Chua, professor at Yale Law and bestselling author, signs books after speaking at a Global Order workshop; PWH Visiting Fellow Irina Bokova, former Director-General of UNESCO, speaks on the importance of international institutions; U.S. Congressman Adam Schiff speaks to Penn students from his home state of California; PWH Visiting Fellow Graeme Wood, national correspondent for The Atlantic, moderates a panel of journalists.

THE GLOBAL INNOVATION PROGRAM

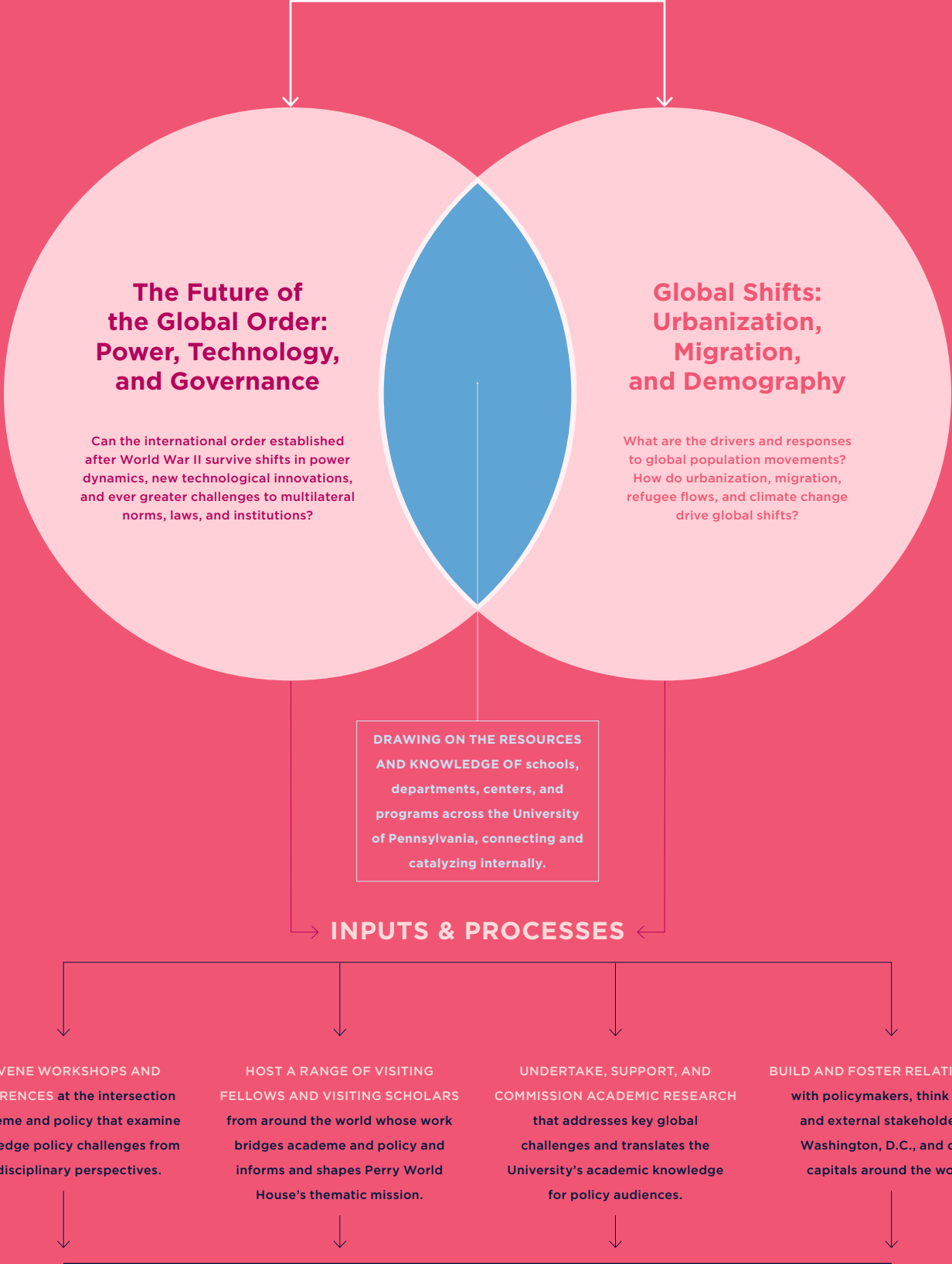
THE GLOBAL INNOVATION PROGRAM ADVANCES PERRY WORLD HOUSE'S RESEARCH AND POLICY MISSIONS BY TRANSLATING ACADEMIC RESEARCH INTO TRACTABLE POLICY IMPACT. OUR APPROACH IS, FIRST, TO CONVENE INTERDISCIPLINARY CONVERSATIONS THAT BRING TOGETHER THE WORLDS OF POLICY AND ACADEME AND, SECOND, TO FACILITATE AND GENERATE IMPACTFUL RESEARCH PROJECTS THAT INFLUENCE POLICYMAKING IN GLOBAL AFFAIRS. UNDER THE RUBRIC OF THE GLOBAL INNOVATION PROGRAM, PERRY WORLD HOUSE HAS TWO INAUGURAL RESEARCH THEMES: *THE FUTURE OF THE GLOBAL ORDER: POWER, TECHNOLOGY, AND GOVERNANCE* AND *GLOBAL SHIFTS: URBANIZATION, MIGRATION, AND DEMOGRAPHY*.

Already in our second year, these two themes and the research and conversations each has sparked are helping scholars, policymakers, and students alike understand this dynamic moment in global affairs. Both themes draw on the resources and knowledge of schools, departments, centers, and programs across the University of Pennsylvania, connecting and catalyzing internally, as we collectively engage external policy audiences. The *Future of the Global Order* theme asks hard questions about whether the international order established after World War II can survive shifts in power dynamics, new technological innovations, and ever greater challenges to multilateral norms, laws, and institutions. The *Global Shifts* theme examines the drivers and responses to global population movements, whether created by urbanization or migration, refugee flows or climate change.

The Global Innovation Program is built upon a robust set of programs. First, we convene workshops and colloquia at the intersection of academe and policy that examine cutting-edge policy challenges from interdisciplinary perspectives. Second, we host a range of Visiting Fellows and Visiting Scholars from around the world whose work bridges academe and policy and informs and shapes Perry World House's thematic mission. These visitors are integrated into the life of Perry World House and the broader university, mentoring students, co-authoring with faculty, convening conversations, guest-lecturing in classes, and conducting research. Third, we undertake, support, and commission academic research that addresses key global challenges and translates the University's academic knowledge to policy audiences. Finally, we build and foster relationships with policymakers, think tanks, and external stakeholders in Washington, D.C., and other capitals around the world.

Ultimately, the Global Innovation Program seeks to shape debates and inform key decisions in policy audiences around the world. By advancing and informing policy debates with the benefits of real academic knowledge and expertise, Perry World House and Penn can have a positive impact on key issues of global concern. Over time, the Global Innovation Program seeks to generate and publicize the big ideas the world needs at a tenuous time.

THE GLOBAL INNOVATION PROGRAM



The Future of the Global Order: Power, Technology, and Governance

Can the international order established after World War II survive shifts in power dynamics, new technological innovations, and ever greater challenges to multilateral norms, laws, and institutions?

Global Shifts: Urbanization, Migration, and Demography

What are the drivers and responses to global population movements? How do urbanization, migration, refugee flows, and climate change drive global shifts?

DRAWING ON THE RESOURCES AND KNOWLEDGE OF schools, departments, centers, and programs across the University of Pennsylvania, connecting and catalyzing internally.

INPUTS & PROCESSES

CONVENE WORKSHOPS AND CONFERENCES at the intersection of academe and policy that examine cutting edge policy challenges from interdisciplinary perspectives.

HOST A RANGE OF VISITING FELLOWS AND VISITING SCHOLARS from around the world whose work bridges academe and policy and informs and shapes Perry World House's thematic mission.

UNDERTAKE, SUPPORT, AND COMMISSION ACADEMIC RESEARCH that addresses key global challenges and translates the University's academic knowledge for policy audiences.

BUILD AND FOSTER RELATIONSHIPS with policymakers, think tanks, and external stakeholders in Washington, D.C., and other capitals around the world.

COLLECTIVELY ENGAGING POLICY AUDIENCES

The Future of the Global Order: Power, Technology & Governance



THE RISE OF POPULISM AND NATIONALISM AROUND THE GLOBE IS PUTTING NEW PRESSURES ON THE FUTURE OF THE GLOBAL ORDER. TO ADDRESS THESE PRESSURES AND IDENTIFY POSSIBLE RESPONSES, THIS YEAR, THE GLOBAL ORDER RESEARCH THEME FOCUSED PARTICULARLY ON THE CAUSES AND EFFECTS OF POPULISM AND NATIONALISM. CRITICALLY IMPORTANT AT THE MOMENT IN GLOBAL AND DOMESTIC POLITICS, THESE QUESTIONS INFORMED OUR WORKSHOPS, COLLOQUIA, AND RESEARCH THROUGHOUT THE ACADEMIC YEAR.

In the aftermath of World War II, scholars and statespersons came together to establish the organizations, rules, and norms that comprised a new liberal international order and have subsequently ensured relative peace, prosperity, and security for generations. Today, as new powers rise, technologies advance, and international institutions evolve, this global order is under profound pressure from within and without. The effectiveness of populist and nationalist discourse adds a critical new dimension to these pressures.

At a time of technological, governance, and cultural disruptions in the world and the global order itself, academic research of scholars at Penn and elsewhere can provide the insight necessary for statespersons, military officials, international institutional leaders, business executives, and even everyday citizens to plot a course forward toward a more prosperous and peaceful future. Throughout the 2017–2018 academic year, Perry World House convened conferences and workshops to provide such insights and help academics and policymakers work together to answer this era's big questions.

A panel of academics and policy experts discuss the evolution of global climate policy at the 2017 Global Order Colloquium.



2017 GLOBAL ORDER COLLOQUIUM: THE FUTURE OF THE GLOBAL ORDER IN AN ERA OF POPULISM, NATIONALISM & RETRENCHMENT

On September 25 and 26, 2017, Perry World House hosted the inaugural colloquium for its *Future of the Global Order: Technology, Power, and Governance* research theme. The colloquium explored, from both academic and policy perspectives, how the phenomena of populism, nationalism, and retrenchment are altering the global order. World leaders, diplomats, military officials, journalists, and industry experts engaged with scholars, policy experts, and the University of Pennsylvania community to answer questions, including: Can the global order survive in an era of nationalism? Will international alliances overcome national retrenchment? When is electoral democracy a pathway to populism? What key forces will shape the world's economic future? Keynote speakers included former NATO Supreme Allied Commander Europe Admiral James Stavridis, former Undersecretary of Defense for Policy Michèle Flournoy, 47th Vice President of the United States Joseph R. Biden, and former Mexican President Felipe Calderón.

Several key themes emerged from the colloquium:

- › The 21st century is witnessing a devolution of power away from nation-states, eroding their ability to constrain non-traditional actors.
- › Technological change provides the opportunity for policymakers and public policy to leverage new technologies in defense of the liberal international order against the forces of populism, nationalism, and retrenchment.
- › The restoration of stability will require the restoration of lost social trust—among citizens, cultures, ethnicities, religions, and nations, and particularly those at the domestic level.

CAN THE GLOBAL ORDER SURVIVE IN AN ERA OF NATIONALISM? WILL INTERNATIONAL ALLIANCES OVERCOME NATIONAL RETRENCHMENT? WHEN IS ELECTORAL DEMOCRACY A PATHWAY TO POPULISM? WHAT KEY FORCES WILL SHAPE THE WORLD'S ECONOMIC FUTURE?



47th Vice President of the United States Joe Biden in conversation with former President of Mexico Felipe Calderón at the inaugural Penn Biden Leaders Dialogue in September 2017.

The Future of the Global Order: Power, Technology & Governance

CONTINUED

GLOBAL ORDER WORKSHOPS

To continue exploring these questions and many others, Perry World House hosted a number of workshops throughout the year to examine timely issues challenging scholars from across Penn and policymakers from around the world. These workshops included:

› **North Korea: Bargaining in the Shadow of Armed Conflict**

As tensions heated up over North Korea's nuclear program, Perry World House brought together senior scholars, policy experts, former diplomats, and security practitioners in October 2017 to examine the potential for, and obstacles to, negotiations between the United States and North Korea.

› **Pandemic Risk: A Threat to Global Health Security**

In November 2017, Perry World House and Penn Nursing together hosted a workshop, bringing together policymakers and scholars to explore innovative interventions that could improve governance responses to pandemic diseases. Populism and nationalism have exacerbated these governance challenges—even around global health issues. Workshop participants also discussed how governments can better coordinate with academia, private industry, and international organizations to mitigate pandemic risk.

› **The Global Order in a New Age of Nationalism**

In April 2018, Perry World House convened a high-level workshop of senior scholars and policymakers to discuss the root causes of nationalist movements and moments around the world. To determine whether the nationalist fever is breaking or still building, participants responded to a novel survey that served as the foundation for conversations at the workshop and in the post-conference report. The closed-door interdisciplinary discussion was capped with a public conversation between *The Atlantic's* Graeme Wood and Yale Law professor Amy Chua about her new book, *Political Tribes*.

› **New Directions in Money and Finance**

In March 2018, Julia Gray, an associate professor of political science, hosted a workshop at Perry World House that covered topics related to international relations and finance, ranging from outward foreign direct investment from developing countries to the impact of external pressure on public opinion in the case of U.S.–China currency relations to how international banking regulations on illicit money are disrupting international trade.

GLOBAL ORDER PUBLICATIONS & RESEARCH OUTPUTS

Perry World House has used a number of different formats to put the results of its conversations and collaborations in the right hands at the right time. The Global Order Colloquium Report served as a digest not just of the conversation in September but also highlighting the most significant thinking on populism, nationalism, and retrenchment in the academic and policy worlds. To reach a broader audience, PWH released a Nationalism Explainer based on the aforementioned April workshop that translates the latest thinking on the topic and the survey data of participants into an easy-to-understand teaching tool. Perry World House also continued its collaboration and regular column with the *Bulletin of Atomic Scientists*, a magazine at the intersection of academia and the policy world, on how emerging technologies are shaping global politics.

Admiral James Stavridis, former NATO Supreme Allied Commander Europe, speaking on "The Future of the International Security Environment" at the fall 2017 Global Order Colloquium.





HIGHLIGHTED GLOBAL ORDER VISITOR: IRINA BOKOVA

Perry World House hosted a number of visitors in the Global Order theme during the 2017–2018 academic year. Exemplary of the impact of these visits was that of Irina Bokova.

In January 2018, Irina Bokova, the former Director-General of the United Nations Educational, Scientific, and Cultural Organization, or UNESCO, was at the University of Pennsylvania for a series of events hosted by Perry World House, the Law School, and the Graduate School of Education. Bokova, a Perry World House Distinguished Visitor, met with students, faculty, and members of the Penn and Philadelphia communities, and presented compelling arguments for the ability of international institutions and culture to bring a rapidly changing world together. Throughout the week, Bokova spoke to and met with hundreds of members of the Penn community, in public events, private conversations, and through the PWH podcast, *The Global Cable*.

In one major event at Perry World House, Bokova spoke of her leadership at UNESCO and in the international community more broadly. She then joined a panel conversation with PWH Director Bill Burke-White, former Assistant Secretary of State for International Organization Affairs Bathsheba “Sheba” Nell Crocker, and Johns Hopkins University Professor Ruth Wedgwood, to discuss the role of international institutions as well as reforms needed at a dynamic moment in the world.

In another event, Bokova joined a spirited panel, moderated by Perry World House’s Deputy Director LaShawn Jefferson, with leaders of the Philadelphia and Penn communities. Bokova, Zabeth Teelucksingh, Executive Director for the nonprofit Global Philadelphia Association, and Brian Daniels, Director of Research and Programs for the Penn Cultural Heritage Center at the University of Pennsylvania Museum, discussed the power of culture and heritage to bring the world together.

Global Shifts: Urbanization, Migration & Demography



Ruxandra Paul, assistant professor of political science at Amherst College, responds to a panelist at the spring 2018 Global Shifts Colloquium.

WITH SUSTAINED REFUGEE FLOWS AROUND THE GLOBE AND GROWING CHALLENGES FOR THE ACCEPTANCE AND INCORPORATION OF REFUGEES INTO HOST COUNTRIES, THIS YEAR, THE GLOBAL SHIFTS RESEARCH THEME FOCUSED ON THE IMPERATIVE OF INTEGRATION FOR FORCED MIGRANTS. MORE SPECIFICALLY, THE GLOBAL SHIFTS THEME LOOKED TO IDENTIFY PROCESSES FOR BUILDING INCLUSIVE, SUSTAINABLE CITIES WELCOMING TO MIGRANTS AND THE NEED FOR EVIDENCE- AND DATA-INFORMED POLICIES ON REFUGEES AND MIGRATION. LEVERAGING CONVENINGS AND A RENEWED ATTENTION TO THE COMPLEXITIES OF MIGRATION AND URBANIZATION, THE GLOBAL SHIFTS RESEARCH THEME IDENTIFIES AND ADVANCES POLICIES THAT ASSIST REFUGEES AND HOST COMMUNITIES ALIKE.

Widespread political unrest and contestation, protracted armed conflict, worsening climate change, population aging, and economic hardship are just some of the factors contributing to dramatic population shifts globally. This mass human movement demands sophisticated and coordinated global attention that acknowledges the tremendous consequences in the areas of social order, human rights, governance, and cultural practices, among others. At a moment when the world is seeing the greatest level of displacement since World War II, unprecedented rates and patterns of urbanization, and new demographic trends, better understanding these complex and intersecting global phenomena is critical to identifying more salient policy responses.

Throughout the 2017–2018 academic year, Perry World House convened colloquia and workshops to bridge the worlds of academics and policymakers, to translate academic research into terms useful to the policy community, to build relationships with key stakeholders, and to contribute to policy interventions for target audiences at the local, national, and supranational levels.

PERRY WORLD HOUSE'S MOST-LIKED TWEET FROM THE 2017-2018 ACADEMIC YEAR WAS A QUOTE ON THE IMPORTANCE OF HUMAN RIGHTS FROM ZEID RA'AD AL HUSSEIN AT THE 2018 GLOBAL SHIFTS COLLOQUIUM.



2018 GLOBAL SHIFTS COLLOQUIUM: PROSPECTS FOR REFORM ON INTERNATIONAL MIGRATION & REFUGEES

Over two days in April 2018, Perry World House convened scholars, journalists, lawyers, researchers, policymakers, human rights defenders, city officials, local activists, and practitioners for the second annual colloquium for its *Global Shifts: Urbanization, Migration, and Demography* research theme. The rich array of stakeholders convened at Penn tackled critical questions around prospects for policy reform on migration; the role media played in shaping public perceptions of migrants and refugees; and the special needs of the increasing number of refugees in protracted situations. The colloquium was keynoted by then High Commissioner for Human Rights Zeid Ra'ad Al Hussein, who re-centered the migration debate as an essential human rights issue. It also included a rich dialogue that showed the effects of the global phenomenon locally by featuring Philadelphia's former City Solicitor Sozi Tulante, who defended Philadelphia's status as a "sanctuary city" against the Justice Department, in conversation with Yasmine Mustafa, a Philadelphia-based women's rights activist and entrepreneur with a compelling story about her own experience immigrating to the U.S.

GLOBAL SHIFTS WORKSHOPS

Perry World House's Global Shifts workshops this year were opportunities to convene around more discrete sets of challenges through focused, invitation-only days of academic inquiry and policymaker engagement. These workshops—through their format and the selectivity of the participants—examined complementary questions about meaningful integration of refugees into host countries and the specific challenges and opportunities of increased migration to urban or urbanizing areas.

*Yasmine Mustafa,
Chief Executive
Officer of ROAR for
Good, shares her
story of immigrating
to the United States
and becoming
an activist and
entrepreneur.*

› **The Imperative of Integration for Forced Migrants: A Multi-Stakeholder Analysis of Policy Prospects**

This workshop responded to global upheaval around national and regional responses to migration flows, with a significant number of refugees experiencing protracted displacement, inchoate, and uneven European Union policy and practices, and the U.S. engaged in a broader campaign to deter undocumented migration to the U.S. In December 2017, Perry World House convened a high-level workshop of scholars, policymakers, and practitioners to examine questions around meaningful, multi-faceted, and long-term integration of refugees into host countries.

› **The New Urban Agenda: How Stakeholders are Defining and Driving Implementation**

In January 2018, Perry World House brought together senior scholars and policy experts to deepen thinking about sustainable urban development and the New Urban Agenda. Workshop participants focused on advancing thinking and policy ideas on the impact of urbanization and its specific effects on migrants, social networks, transportation, sustainability, and affordable housing. This workshop also served as a moment to launch a Perry World House-edited set of white papers drafted by Penn faculty and staff on the different challenges and opportunities of the New Urban Agenda in preparation for the 9th World Urban Forum in Kuala Lumpur, Malaysia.

Global Shifts: Urbanization, Migration & Demography

CONTINUED



Perry World House, Penn IUR, and the Kleinman Center for Energy Policy present Penn research on sustainable urban development at the World Urban Forum in Kuala Lumpur, Malaysia.

BRINGING PENN'S EXPERTISE TO THE U.N. AT THE WORLD URBAN FORUM

Perry World House collaborated with two other research centers at Penn to bring Penn's urban expertise to the World Urban Forum (WUF9)—the United Nations' premier conference on urban issues—held in Kuala Lumpur, Malaysia, in February 2018. Perry World House, in partnership with the Penn Institute for Urban Research (Penn IUR) and the Kleinman Center for Energy Policy (KCEP), commissioned and published a white paper series in advance of the February event, staged a multi-disciplinary exhibition of Penn research at the week-long forum, and sent a delegation of 14 scholars, students, and staff members to Kuala Lumpur to participate. By joining forces to present at WUF9, Perry World House brought timely Penn-based scholarship that addressed pressing sustainable urbanization issues to leading policymakers and practitioners from the U.N. and participating national and local governments.

PERRY WORLD HOUSE WORKS CLOSELY WITH THE PENN INSTITUTE FOR URBAN RESEARCH (PENN IUR) AND THE KLEINMAN CENTER FOR ENERGY POLICY (KCEP) FOR MANY GLOBAL SHIFTS RESEARCH OUTPUTS AND EVENTS.

BORDERS & BOUNDARIES RESEARCH PROJECT

Under the rubric of the Global Shifts research theme, Penn Integrates Knowledge Professor Beth Simmons launched a significant new research project on Borders and Boundaries. The Borders and Boundaries Project is concerned with how humans demarcate the space between “us” and “them.” This project launched into major data collection and explored boundaries between organized human communities, including international borders, border regions, and border crossings. These borders have multiple repercussions as designations of state authority, security buffers, expressions of social meaning, and markers of economic separation and opportunities for economic integration. Border regions and activities speak to national and local encounters with neighbors and the rest of the world. Three distinct research avenues are being pursued, which include: (1) a geo-spatial analysis of whether, where, and why some states choose to project their presence at international border crossings; (2) a textual analysis of the discourse surrounding international borders; and (3) an investigation of how European Union policies affect local communities living along international borders.

In May 2018, Perry World House hosted a Borders and Boundaries workshop on International Borders in a Globalizing World. The convening brought academic experts from around the world to present and discuss cutting-edge, policy-oriented research on borders and boundaries in international politics, exploring the issues of border politics through moral, legal, economic, and security prisms. Several of the papers touched on themes surrounding the unintended consequences of border security policy. Some of the presented research, for example, linked border fortifications with heightened criminal activity along the borders of the United States and Israel. Similarly, an analysis of European borders linked heightened border restrictions with increases in migrant deaths during the 2015 migrant crisis. The effects on political economy were multi-faceted, with some scholars linking border walls with reduced international trade, and others finding little relationship between border infrastructure and the ease of doing business across borders. This research collectively called for a need to more deeply scrutinize the social, political, and economic ramifications of the border security policies that are increasingly prominent throughout much of the world.

A panel at a Borders and Boundaries workshop examines cutting edge policy-oriented research on international borders.



Global Shifts: Urbanization, Migration & Demography

CONTINUED

GLOBAL SHIFTS PUBLICATIONS & RESEARCH OUTPUTS

In addition to publishing post-workshop and post-colloquium outcome documents outlining the key takeaways from each gathering of scholars and policymakers, Perry World House was a key partner in developing a series of papers in advance of the 9th World Urban Forum in Kuala Lumpur, Malaysia. Penn faculty members including Eugénie Birch (PennDesign), Mark Alan Hughes (PennDesign), Lisa Mitchell (School of Arts and Sciences), Susan Wachter (Wharton), and William Burke-White (Penn Law) worked with policymakers and younger scholars from around the world to contribute to the *Penn: Current Research on Sustainable Urban Development* paper series.

The paper series is available at penniur.upenn.edu/wuf9.



MORE THAN WINDOW DRESSING? STAKEHOLDERS AND PARTNERSHIPS IN U.N. GLOBAL AGREEMENTS ON SUSTAINABLE URBAN DEVELOPMENT: AN EXPLORATION OF ARRANGEMENTS TO MOVE TOWARD PLURALISTIC GLOBAL GOVERNANCE

EUGÉNIE BIRCH

Co-Director, Penn Institute for Urban Research; Lawrence C. Nussdorf Professor of Urban Research and Education Professor; Department of City and Regional Planning, School of Design



HOUSING CHALLENGES AND THE NEW URBAN AGENDA

SUSAN WACHTER

Co-Director, Penn Institute for Urban Research; Sussman Professor; Professor of Real Estate and Finance, The Wharton School

AND MARJA HOEK-SMIT

Director of International Housing Finance Program, Wharton

AND KHUNG-HWAN KIM

Perry World House Visiting Scholar



PUTTING ENERGY INTO IMPLEMENTATION: CHALLENGES TO SUBNATIONAL PARTICIPATION IN SDG 7

MARK ALAN HUGHES

Professor of Practice, PennDesign; Faculty Director, Kleinman Center for Energy Policy

AND CORNELIA COLIJN

Kleinman Center for Energy Policy



THE CHANGING LANDSCAPE OF CLIMATE GOVERNANCE: THE ROLE OF CITIES AS POLITICAL ACTORS AND POLICY IMPLEMENTERS

WILLIAM BURKE-WHITE

Director, Perry World House; Richard Perry Professor, University of Pennsylvania

AND LAURA BARRON

Penn Institute for Urban Research



SPACES OF COLLECTIVE REPRESENTATION: URBAN GROWTH, DEMOCRACY, AND POLITICAL INCLUSION

LISA MITCHELL

Associate Professor; Director, South Asia Center

HIGHLIGHTED GLOBAL SHIFTS VISITOR: ANNE RICHARD

During the 2017–2018 academic year, Perry World House hosted a number of visitors under the Global Shifts research theme. Exemplary of the impact at Penn was the visit of Anne Richard.

The former Assistant Secretary of State for Population, Refugees, and Migration engaged in a variety of projects throughout the semester that involved critical stakeholders within Penn and externally, helping Perry World House to foster global policy engagement. Richard led a semester-long working group comprising Penn professors, lecturers, and doctoral and postdoctoral students that looked at the role of U.S. refugee-assistance programs and policies within the overall context of U.S. foreign policy. Penn academics deepened their knowledge around hot-button policy crises, such as how refugee integration is achieved, and the processes and deliberations governments undertake to establish refugee caps. The working group also tackled issues around how to provide stronger evidence-based learning on refugee absorption capacity and integration policies.

In addition, Richard was a leading policy expert in one of University President Amy Gutmann's highest profile and highest level annual public events, the 2018 Silfen University Forum, where she, in conversation with President Gutmann, 47th Vice President of the United States Joe Biden, and former Governor of Florida Jeb Bush, among other panelists, discussed a new global framework for asylum seekers, refugees, and immigration policy.

Externally, Richard helped bring Penn's expertise to the U.N. at the World Urban Forum in Kuala Lumpur, Malaysia, in February 2018. As a part of a Penn white paper series, she co-authored an insightful paper on the importance of strengthening evidence-based learning to facilitate refugee integration as a more responsible and durable approach. These papers, grounded in cross-disciplinary research, reflected Penn's expertise on a range of urban issues, and served as a basis for engagement at the World Urban Forum.



PWH Seminar Series



FOSTERING INTERDISCIPLINARY CONVERSATIONS FOCUSING ON POLICY-RELEVANT ACADEMIC SCHOLARSHIP IS A KEY ELEMENT OF OUR MISSION. THE WORLD HOUSE SEMINAR SERIES IS A WEEKLY SEMINAR FOR GLOBALLY MINDED PENN FACULTY, ADVANCED GRADUATE STUDENTS, AND POSTDOCTORAL FELLOWS TO PRESENT AND RESPOND TO ACADEMIC WORKS IN PROGRESS. THE SEMINAR GIVES PRESENTERS AN OPPORTUNITY TO RECEIVE TIMELY FEEDBACK AND CONSTRUCTIVE CRITICISM OF THEIR WORK IN A CONTEXT THAT EMBRACES LINKAGES BETWEEN RESEARCH AND IMPACT. THE SERIES PREDOMINANTLY SHOWCASES THOSE WHOSE WORK RELATES TO OUR TWO INAUGURAL RESEARCH THEMES, *GLOBAL SHIFTS* AND *THE FUTURE OF THE GLOBAL ORDER*.

Examples of seminar presentations during the 2017–2018 academic year illustrate the interdisciplinary, policy-oriented approach of the World House Seminar Series:

COMPLEXITY & COMPLIANCE IN THE INTER-AMERICAN HUMAN RIGHTS SYSTEM

Christiane Carneiro, *Perry World House Visiting Scholar, Assistant Professor of Political Science, University of São Paulo*

REFUGEES & MIGRANTS: A MODEL INTERNATIONAL MOBILITY CONVENTION

Michael W. Doyle, *Professor, School of International Public Affairs, Columbia University*

URBAN REFUGE: SPACES OF CONTROL, HOSPITALITY & AMBIGUOUS GOVERNANCE IN THE CITY

Irit Katz, *Postdoctoral Fellow, Perry World House*

RETHINKING THE LINK BETWEEN CIVIL-MILITARY RELATIONS & THE ONSET OF INTERSTATE CONFLICT

Michael Kenwick, *Postdoctoral Fellow, Perry World House*

DYNAMICS OF HOUSING IN EAST ASIA

Kyung-Hwan Kim, *Visiting Fellow, Perry World House; former Vice Minister of Land Infrastructure and Transport, Republic of Korea*

CAN FACEBOOK SAVE DEMOCRACY?

(CO-SPONSORED WITH FOX LEADERSHIP INTERNATIONAL)
Asha Rangappa, *Director of Admissions and Senior Lecturer, Jackson Institute for Global Affairs, Yale University*



The Global Cable Podcast



PERRY WORLD HOUSE
RELEASED 22 EPISODES
OF *THE GLOBAL CABLE*
DURING THE PODCAST'S
FIRST YEAR.

IN 2017, PERRY WORLD HOUSE LAUNCHED A NEW PODCAST TO BRING THE WORK OF PWH, INSIGHTS FROM PWH'S VISITORS, AND THE KNOWLEDGE OF PENN FACULTY TO A BROAD AUDIENCE BEYOND PENN'S CAMPUS. PODCASTS ARE A RAPIDLY GROWING MEDIUM FOR REACHING TARGET AUDIENCES INCLUDING STUDENTS, POLICYMAKERS, AND PENN ALUMNI, ON AN EASILY ACCESSIBLE PLATFORM. PERRY WORLD HOUSE'S PODCAST, *THE GLOBAL CABLE*, DOES JUST THAT.

Hosted by Perry World House Executive Director, Professor William Burke-White and Associate Director, Professor Michael Horowitz, the half-hour *The Global Cable* podcast, a weekly interview program recorded and produced at Perry World House, digs into tough global challenges and responds to truly international issues, with guests including Penn faculty, PWH visitors, and international experts.

You can subscribe to *The Global Cable* on iTunes, Stitcher, or wherever you find your podcasts.

HIGHLIGHTED EPISODES:

SANGUINE SCHOLAR OR: HOW I LEARNED TO STOP WORRYING ABOUT WAR WITH NORTH KOREA

Elizabeth Saunders, *The George Washington University*
Michael Horowitz, *Associate Director, Perry World House*

UNDERSTANDING UNESCO

Irina Bokova, *former Director-General, UNESCO*

THE SEVEN HABITS OF HIGHLY EFFECTIVE NAT-SEC OFFICIALS

Loren DeJonge Schulman, *Deputy Director of Studies, Center for a New American Security*
Bob Scher, *Head of International Affairs, BP America; former Assistant Secretary of Defense for Strategy, Plans, and Capabilities*

SUSTAINABLE DEVELOPMENT #GOALS

Aisa Kirabo Kacyira, *Deputy Executive Director; Assistant Secretary General, U.N.-Habitat*

Visiting Fellows & Visiting Scholars



PERRY WORLD HOUSE EMBRACES THE BELIEF THAT ACADEMICS STUDYING OUR MOST PRESSING GLOBAL CHALLENGES CAN BENEFIT FROM GREATER AND MORE SUSTAINED CONTACT WITH INDIVIDUALS RESPONSIBLE FOR CRAFTING AND IMPLEMENTING POLICY. SO TOO, PERRY WORLD HOUSE RECOGNIZES THAT BETTER POLICIES EMERGE WHEN POLICYMAKERS ARE WELL INFORMED THROUGH ACADEMIC ENGAGEMENT. THE PERRY WORLD HOUSE VISITING FELLOWS AND SCHOLARS PROGRAM ADVANCES THIS DUAL AGENDA.

In a broad sense, Perry World House bridges the divide between academic and policy communities by connecting policymakers and global affairs professionals with Penn faculty and students. The Visiting Fellows Program creates tangible linkages by bringing thought and policy leaders from around the world to Penn for engagements ranging from a week to a semester in residence.

Visiting Fellows come from governments, international institutions, think tanks, and boardrooms, and from as close as Washington, D.C., and as far away as Seoul, South Korea. Despite their differences, the Visiting Fellows have much in common: in-depth experience with key global challenges being explored by Perry World House, an ability to make unique contributions to policy discussions, and an interest in bringing academic knowledge to bear on policy choices.

While in residence at PWH, Visiting Fellows work with Penn faculty on research projects, take part in conversations and classes across the University, mentor Penn students, and advance Perry World House's scholarly initiatives. When they return home, Visiting Fellows apply what they have learned and experienced—and the relationships they have established—to their ongoing work on complex global challenges, greatly extending the “shelf-life” of their PWH residencies. Even after they leave Penn, our visitors leave behind insights and experiences that continue to inform and enrich research and teaching on Penn's campus.

Visiting Scholars are academics from universities in the United States and abroad whose work relates to Perry World House's research themes. These Visiting Scholars advance their own research agendas and expand the perspectives of Penn faculty and students with ideas, insights, and thinking from around the globe. In addition to hosting scholars from universities across the United States and around the globe, each year Perry World House seeks to bring in at least one local Visiting Scholar from a university in the Philadelphia area, which helps build the community of globally-focused scholars in the region.



YEVGENIA ALBATS

PWH—Kelly Writers House Writer-at-Risk

Yevgenia Albats is editor-in-chief of the Russian political weekly *The New Times*. She is also an anchor with the Echo Moskva broadcasting and a recipient of several journalism awards worldwide. She received the Golden Pen Award in 1989, the highest journalism honor in the then-Soviet Union. She was an Alfred Friendly fellow in 1990 and a fellow of the Nieman Foundation for Journalism at Harvard University in 1993. Albats is the author of four books, including *The State Within a State: KGB and Its Hold on Russia—Past, Present, and Future*.



LUIS ALMAGRO

Distinguished Visiting Fellow

Luis Almagro was elected Secretary-General of the Organization of American States in March 2015. A career diplomat, Almagro was Foreign Minister of Uruguay from 2010 until March 2015 and has extensive regional and international experience. In 2014, *Foreign Policy* magazine named him a Leading Global Thinker, one of only 10 decision-makers in the region granted this international distinction.



IRINA BOKOVA

Distinguished Visiting Fellow

Irina Bokova served as the Director-General of UNESCO between November 2009 and November 2017. She was the first woman and the first Eastern European to lead the Organization. As director-general of UNESCO, Bokova actively engaged in international efforts to advance quality education for all, gender equality, and the protection of the world's cultural heritage as a humanitarian imperative and security issue to strengthen the foundations for lasting peace. She actively promoted culture as a driver for development, along with science diplomacy and cooperation.



CRISTIANE LUCENA CARNEIRO

Visiting Scholar

Cristiane Lucena Carneiro is an assistant professor at the International Relations Institute, University of São Paulo. Carneiro has experience in the areas of compliance and regime design, with a focus on the World Trade Organization, migration, and human rights. Carneiro has published on compliance, economic sanctions, institutional complexity, and international regime design.

Visiting Fellows & Visiting Scholars

CONTINUED



DEREK CHOLLET

Visiting Fellow

Derek Chollet is Executive Vice President and Senior Advisor for Security and Defense Policy at The German Marshall Fund of the United States. He authored *The Long Game: How Obama Defied Washington and Redefined America's Role in the World* (Public Affairs, 2016). His previous books include *America Between Wars: From 11/9 to 9/11*, co-authored with James Goldgeier, and *The Unquiet American: Richard Holbrooke in the World*, co-edited with Samantha Power. Chollet served in senior positions during the Obama Administration at the White House, State Department, and Pentagon, most recently as the U.S. Assistant Secretary of Defense for International Security Affairs.



PETER HARRELL

Visiting Fellow

Peter Harrell is a leading expert on U.S. and international economic sanctions and national security issues. As a lawyer in private practice, he advises leading U.S. and foreign companies on sanctions compliance and cross-border regulatory risk issues. Harrell is an adjunct senior fellow at the Center for a New American Security in Washington, D.C., where he publishes regularly on sanctions, trade controls, the Committee on Foreign Investment in the United States (CFIUS), and other international economic issues.



ROSELYN HSUEH

Visiting Fellow

Roselyn Hsueh is an associate professor of political science at Temple University. She is also affiliated with the Asian studies program. Her book, *China's Regulatory State: A New Strategy for Globalization* (Cornell University Press/Cornell Studies in Political Economy, 2011) examines the politics of market reform and evolving government-business relations across industries in post-Mao China. Hsueh's current research projects include her next book, which investigates the mediating role of market governance in the relationship between global economic integration and development outcomes in China, India, and Russia. Hsueh is former Residential Research Faculty Fellow at Institute of East Asian Studies, U.C. Berkeley and former Visiting Scholar at the Center for the Study of Law & Society, U.C. Berkeley School of Law.



AHMET İÇDUYGU

Visiting Scholar

Ahmet İçduygu is Dean of the College of Social Sciences and Humanities at Koç University in Istanbul, Turkey. He holds a dual appointment as a full professor at Koç, one in the Department of International Relations and the other in the Department of Sociology. He is also the Director of the Migration Research Center at Koç. He teaches on migration studies, theories and practices of citizenship, international organizations, civil society, nationalism and ethnicity, and research methods.



BONNIE JENKINS

PWH-Brookings Fellow

Bonnie Jenkins is a former U.S. Department of State Coordinator for Threat Reduction Programs in the Bureau of International Security and Nonproliferation. Jenkins was also the U.S. Representative to the G7 Global Partnership against the Spread of Weapons and Materials of Mass Destruction and chaired the Global Partnership in 2012.



AISA KIRABO KACYIRA

Visiting Fellow

Aisa Kirabo Kacyira is the Deputy Executive Director of U.N.-Habitat and United Nations Assistant Secretary-General. In this role, she provides critical leadership to promote sustainable cities and human settlements globally, engaging widely with governmental and nongovernmental actors.



KYUNG-HWAN KIM

Visiting Scholar

Kyung-Hwan Kim is former Vice Minister of the Ministry of Land, Infrastructure, and Transport of the Republic of Korea. Kim is a professor of economics at Sogang University where he has been on the faculty since 1988 and was academic dean from 2003 until 2006.



ANNE C. RICHARD

Visiting Fellow

Anne C. Richard served as Assistant Secretary of State for Population, Refugees, and Migration in the U.S. State Department from 2012 to 2017. Prior to her appointment, Richard was the vice president of government relations and advocacy for the International Rescue Committee and non-resident fellow of the Center for Transatlantic Relations at Johns Hopkins University School of Advanced International Studies.



ROBERT SCHER

Visiting Fellow

Robert M. Scher served as United States Assistant Secretary of Defense for Strategy, Plans, and Capabilities. As the assistant secretary, Scher advised the Secretary of Defense and the Undersecretary of Defense for Policy in areas including national security and defense strategy; the forces and contingency plans necessary to implement defense strategy; nuclear deterrence and missile defense policy; and security cooperation plans and policies.



AARON SHULL

Visiting Fellow

Aaron Shull is the Centre for International Governance Innovation's (CIGI) Chief Operating Officer and General Counsel, effective March 2015. Prior to that he was CIGI's counsel and corporate secretary and was also a research fellow beginning in 2013. He continues to act as corporate secretary. As general counsel, he responds to legal inquiries from senior management that relate to corporate, contractual, employment, occupational health and safety, intellectual property, dispute resolution, and compliance related matters.



GRAEME WOOD

Visiting Fellow

Graeme Wood is a national correspondent for *The Atlantic*, former contributing editor to *The New Republic*, and books editor of *Pacific Standard*. Wood was the 2015–2016 Edward R. Murrow Press Fellow at the Council on Foreign Relations and is a lecturer in political science at Yale University.

Postdoctoral Fellows



POSTDOCTORAL FELLOWS AT PERRY WORLD HOUSE BRING NEW IDEAS, ENERGY, AND INSIGHTS TO THE RESEARCH THEMES OF THE GLOBAL INNOVATION PROGRAM.

Recent Ph.D. recipients from leading universities around the world spend a year at PWH, researching, writing, and connecting with the Penn community. Selected on the basis of overall excellence and doctoral research pertinent to our two inaugural research themes, these individuals pursue their own academic research, as well as support the collective efforts of the PWH community, such as by serving as an advising supervisor for the World House Student Fellows yearlong policy projects and helping to shape our colloquia and workshops. Upon completion of their fellowships, they become part of Penn's growing network around the globe. The postdoctoral fellows program not only brings new ideas to Penn but also reflects our commitment to expanding the pipeline of new scholars working on critical global issues.

In 2017–2018, Perry World House had six fellows whose research interests represent the diversity of PWH's Global Innovation Program.



REBECCA FRIEDMAN LISSNER

Postdoctoral Fellow

Rebecca Friedman Lissner received her Ph.D. in Government from Georgetown University. As a postdoctoral fellow at Perry World House, Lissner worked on a research project examining how lessons learned from military interventions have shaped U.S. grand strategy since World War II, published multiple articles including one in *Washington Quarterly* about the future of U.S. grand strategy and international order (May 2018) that garnered an invitation to brief Secretary of Defense Jim Mattis, and conducted major manuscript revisions during her book workshop held at Perry World House. Lissner will be an assistant professor in January 2019.



JULIE GAMBLE

Postdoctoral Fellow

Julie Gamble holds a Ph.D. and Master of City and Regional Planning (M.C.P.) from the Department of City and Regional Planning at the University of California, Berkeley. While at Perry World House, Gamble focused on her book manuscript, which engages questions about how urban infrastructures such as transit are a broader site to explore global shifts like urban sustainability and citizenship rights. Gamble is now an assistant professor of urban studies at Trinity College.



IRIT KATZ

Postdoctoral Fellow

Irit Katz received her Ph.D. in Architecture from the University of Cambridge. As a postdoctoral fellow, Katz focused on studying urban spaces of displacement and wrote academic articles, book chapters, and policy briefing papers on the subject. She also worked on her monograph *The Common Camp*, which is based on her doctoral research on camps in Israel–Palestine, and completed a co-edited volume on camps, forthcoming in the Rowman & Littlefield book series “Geopolitical Bodies, Material Worlds.” Katz is now a postdoctoral fellow at the Paul Mellon Centre of Yale University in London.



MICHAEL KENWICK

Postdoctoral Fellow

Michael Kenwick received his Ph.D. from the Pennsylvania State University. Kenwick’s substantive research interests center on the relationship between domestic institutions and conflict processes with an emphasis on civil–military relations. During his year at Perry World House, Kenwick completed a series of articles relating to civilian control of the military and interstate conflict processes and worked on the “Borders and Boundaries” project with Penn Integrates Knowledge Professor Beth Simmons. Kenwick is now returning to Perry World House as manager of the Borders and Boundaries project and postdoctoral fellow.



BENJAMIN LAUGHLIN

Predoctoral Fellow

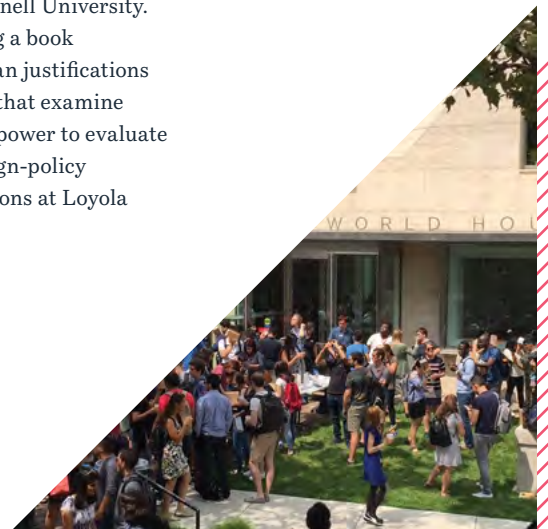
Laughlin’s research lies at the intersection of comparative politics and international relations and explores several themes, including the individual motivations of refugees fleeing conflict zones, the role of cell phones in civil wars, and the effects of border security on the Mexican drug war. During his year at Perry World House, Laughlin collaborated with Andrea Mitchell University Professor of Law and Political Science Beth Simmons on the project “Borders and Boundaries.” Laughlin is now returning to Perry World House as a Borders and Boundaries predoctoral fellow.



SARAH MAXEY

Postdoctoral Fellow

Sarah Maxey received her Ph.D. in International Relations from Cornell University. During her year at Perry World House, Maxey focused on completing a book manuscript that explains the pattern and importance of humanitarian justifications in contemporary security interventions. She also worked on articles that examine partisanship, foreign-policy orientations, morality, and presidential power to evaluate when and how the public holds presidents accountable for their foreign-policy decisions. Maxey is now an assistant professor of international relations at Loyola University Chicago.



THE GLOBAL EXPLORATION PROGRAM

THROUGH THE GLOBAL EXPLORATION PROGRAM, PERRY WORLD HOUSE ENGAGES THE PENN UNDERGRADUATE AND GRADUATE STUDENT COMMUNITIES, ELEVATING GLOBAL POLICY ENGAGEMENT ON PENN'S CAMPUS.

Perry World House's student programs facilitate dialogue, conversation, and education about critical global issues. The Global Exploration Program connects Penn students with thought leaders from around the world, trains our students in policy analysis and related skills, and fosters relationships with other globally minded students across Penn's campus. Students are competitively selected for our flagship World House Student Fellows and Graduate Associates programs, which allow them to deepen their skills, broaden their knowledge of global policy issues, hone their global policy analysis skills, enhance their research through a policy application, and develop one-on-one relationships with thought leaders, practitioners, policymakers, and academics. Beyond those specialized, application-only programs, a full calendar of student-centric events includes weekly conversations on timely global topics, policy simulations, a global career week, and a regular series of cultural gatherings. Students also experience PWH remotely and at their own leisure through *The Global Cable* podcast that featured interviews with some of PWH's most compelling guests.



World House Student Fellows Program



THE WORLD HOUSE STUDENT FELLOWS PROGRAM PROVIDES PENN UNDERGRADUATE STUDENTS THE MENTORSHIP, SKILLS, EXPERIENCE, AND NETWORK NEEDED TO LAUNCH CAREERS IN THE GLOBAL POLICY WORLD.

During an academic year, the World House Student Fellows participate in activities oriented around critical global inquiry, including a weekly topical seminar discussion, interdisciplinary policy projects, and special events that include office hours with high-profile Visiting Fellows. The World House Student Fellows program encourages students to think about public policy and globalization by exposing them to interdisciplinary topics such as language, ethics, security, regional cultures, and politics.

The 2017–2018 class of World House Student Fellows included 30 undergraduate students drawn from all four of Penn’s schools (College of Arts and Sciences, School of Engineering and Applied Science, Nursing, and Wharton).

A distinguishing element of the World House Student Fellows experience is a yearlong policy project. Fellows work in teams on a yearlong project. Each group develops a policy-relevant research question linked to the research themes of Perry World House and spends the year using various methodologies—research, interviews, literature reviews, etc.—to address the issue. At the end of the academic year, each group presents its work to policymakers brought to Penn for their expertise on the issue under study.

The policy projects for 2017–2018 focused on:

THE DEVELOPMENT & USE OF ARTIFICIAL INTELLIGENCE TECHNOLOGY: RECENT TRENDS & PROJECTED EFFECTS

PRECISE INTERVENTION: EARLY & INTERMEDIARY SOLUTIONS FOR HUMANITARIAN CRISES

COUNTERING RUSSIAN HYBRID WARFARE

BREADTH VERSUS DEPTH: RETHINKING THE DEVELOPMENT DIVIDE

CLIMATE REFUGEES & URBAN RESPONSES

THIS COMING YEAR, THE WORLD HOUSE STUDENT FELLOWS WILL TRAVEL TO NEW YORK TO LEARN ABOUT THE UNITED NATIONS AND HOW INTERNATIONAL INSTITUTIONS SHAPE GLOBAL AFFAIRS.

“WITHIN MINUTES OF SECRETARY MATTIS UNROLLING THE NEW NATIONAL DEFENSE STRATEGY, THE STUDENT FELLOWS WERE BEING BRIEFED IN THE PENTAGON ON THE DIRECTIVE BY THOSE WHO WERE INSTRUMENTAL IN WRITING IT.”

— Jake van Arkel (C'18)



Other activities and engagement opportunities the World House Student Fellows program offered to students include:

- › **Unique Access to Faculty and Visitors:** Student Fellows explore and analyze pressing global issues in regular seminars facilitated by Perry World House faculty, staff, and visitors. These seminars also teach students skills to translate research into policy-relevant output. All World House Student Fellows learn how to produce and publish products aimed at influencing government, international, and NGO policy communities in the U.S. and around the world.
- › **Research and Career Mentorship:** World House Student Fellows receive research guidance from affiliated faculty and/or visiting scholars, post-docs, or distinguished visitors. Thesis research and internship funding is also available on a competitive basis.



Top: World House Student Fellows at the Pentagon on the annual trip to Washington, D.C.

Bottom: Zeid Ra'ad Al Hussein, then U.N. High Commissioner for Human Rights, speaks with a student after his keynote conversation at the April 2018 Global Shifts Colloquium.

World House Student Fellows Program

CONTINUED

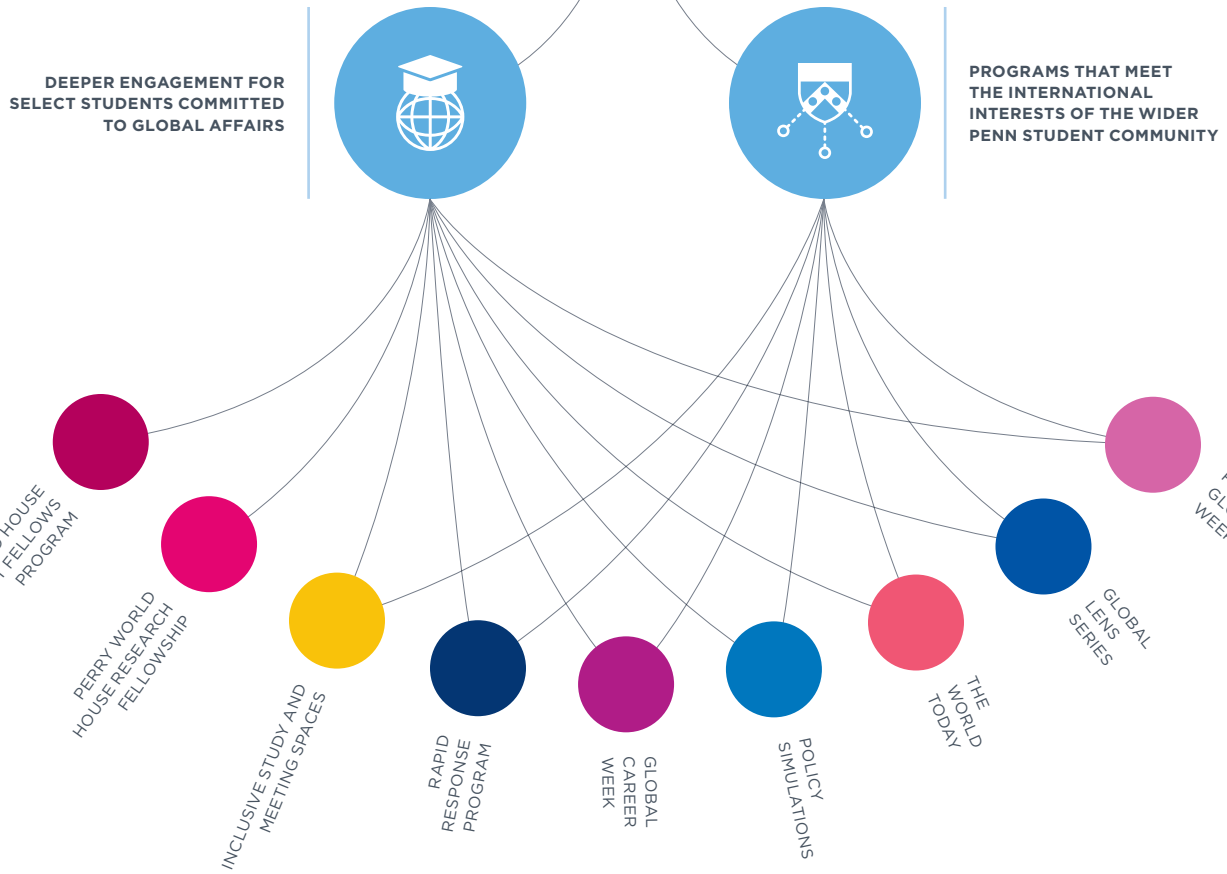
- › **Special Events:** World House Student Fellows have access to small-group conversations with World House Visiting Fellows and guest speakers over the course of their fellowship.
- › **Washington Trip:** Each year, the World House Student Fellows travel to Washington, D.C. for meetings with a diverse group of policymakers who reflect the broad interests of the students, as well as Perry World House as a whole. In January 2018, the students met with former government officials and think tank researchers at Amnesty International and the German Marshall Fund. The students also received a briefing on the U.S. National Defense Strategy at the Pentagon, and met with a group of journalists who cover the Pentagon. The day concluded with a discussion at the new Penn Biden Center about working on Capitol Hill. The conversation included Congressional staffers from across the political spectrum.
- › **Summer Internship and Thesis Research Support:** For the second consecutive year, Perry World House was able to provide funding for World House Student Fellows to take internships and conduct research around the world that they otherwise would not have had. This support enabled students to work in a variety of positions in summer 2018, including:
 - *The Department of the Treasury in Poland*
 - *The Export Assistance Center in New York City*
 - *Researching education policy at the Sri Aurobindo International Center for Education in India*
 - *The Institute for the Study of War in Washington, D.C.*

“FROM DEFENSE TO HUMAN RIGHTS TO THE LEGISLATURE TO THE THINK TANK WORLD, PERRY WORLD HOUSE DOES A GREAT JOB AT CURATING THE TRIP—ONE OF THE FOREMOST HIGHLIGHTS OF A YEAR AS A FELLOW.”

—Sarah Baer (C'18)



Perry World House Student Programming



EACH YEAR, 25-30 PERRY WORLD HOUSE STUDENT FELLOWS ARE COMPETITIVELY SELECTED FROM PENN'S FOUR UNDERGRADUATE SCHOOLS (THE COLLEGE OF ARTS AND SCIENCES, ENGINEERING, NURSING AND WHARTON).

Graduate Associates



IN THE 2017–2018 ACADEMIC YEAR, PERRY WORLD HOUSE ESTABLISHED NEW WAYS FOR GRADUATE STUDENTS TO DEEPEN THEIR EXPLORATION OF WORLD AFFAIRS DURING THEIR TIME AT PENN. PERRY WORLD HOUSE GRADUATE ASSOCIATES FORMED AN INTERDISCIPLINARY COMMUNITY OF STUDENTS WITH ACCESS TO EXCLUSIVE CONVERSATIONS WITH PERRY WORLD HOUSE VISITORS. IN ADDITION, PERRY WORLD HOUSE PROVIDED \$3,000 STIPENDS TO THOSE INTERESTED IN WRITING POLICY-RELEVANT RESEARCH PAPERS ON A TOPIC OF THEIR CHOOSING BUT LINKED TO OUR TWO PRIORITY RESEARCH THEMES—GLOBAL SHIFTS AND GLOBAL ORDER.

Our graduate program brought students into the intellectual life of Perry World House. In addition, Perry World House graduate students contributed to important policy debates happening in Washington and capitals around the world. For example, they produced articles on topics ranging from immigration policy to urban design and from the impact of drones to refugee resettlement. Ben Silverstein, one of our graduate research fellows, published a report on North Korea with the think tank Center for New American Security.

Below: Graduate Associate Clay Gruber, masters candidate in architecture and landscape architecture at PennDesign, participates in a Global Shifts workshop on urbanization and refugees.

Right: Tommy Vietor, host of podcast Pod Save the World and co-founder of Crooked Media, in conversation with associate director and professor of political science, Michael Horowitz.



General Student Programming



IN ADDITION TO PERRY WORLD HOUSE'S DEEP STUDENT ENGAGEMENT WITH BOTH UNDERGRADUATE AND GRADUATE STUDENTS THROUGH THE WORLD HOUSE STUDENT FELLOWS AND GRADUATE ASSOCIATES PROGRAMS, PWH SEEKS TO ENGAGE BROADLY WITH PENN STUDENTS ACROSS A VARIETY OF GLOBAL TOPICS AND ISSUES.

Our general student programming exposes students to new perspectives on global affairs, provides a connecting point for international and exchange students, and offers an avenue for students to explore career opportunities in the global policy space.

“THE MOST DANGEROUS THREAT TO THE U.S. IN THE NEAR TERM IS OUR UTTER INABILITY TO GET ANYTHING DONE POLITICALLY. THE BIGGEST THREAT IN THE LONG TERM IS CHANGING GLOBAL POWER POLITICS.”

— Tommy Vietor, host of Pod Save the World



General Student Programming

CONTINUED

GLOBAL CAREER WEEK

In Fall 2017, Perry World House held its second annual Global Career Week, a series of events and panels focused on potential career tracks for Penn students in global affairs. Some of the events included a panel on international development and human rights; a lunch with Derek Chollet, executive vice president for security and defense policy at the German Marshall Fund, and Bob Scher, assistant secretary of defense for strategy, plans, and capabilities; and an information session on international internships. Exposing students to the range of international paths that Penn alumni and other professionals have taken was important to helping them become aware of the plethora of globally minded career opportunities that exist and builds networks and mentorship for students to launch their careers.

THE WORLD TODAY

Students have expressed enthusiasm for smaller, more informal and intimate discourse on global affairs. Perry World House's "The World Today" series offers just such an opportunity. The World Today is a weekly, in-house intimate conversation about a timely global policy issue with a leading foreign policy scholar or policymaker. This past year, The World Today featured guests speaking on topics including:

- › **Lessons from ISIL, for Jihadists and their Enemies**, with Graeme Wood, correspondent for *The Atlantic* and Perry World House Visiting Fellow
- › **Using Blockchain and Authenticated Images to Address the World's Pressing Issues**, with Mounir Ibrahim, vice president of strategic initiatives at Truepic
- › **The Future Direction of U.S. National Security**, with Frank Hoffman, distinguished research fellow with the Institute for National Strategic Studies
- › **How Has China Redefined Globalization?** with Roselyn Hsueh, associate professor of political science at Temple University and Perry World House Visiting Scholar
- › **Making Media That Matters: Perspectives from a Kenyan Refugee Camp**, with Peter Decherney, director of Penn-in-Kenya and professor of cinema & media studies and English at the University of Pennsylvania
- › **Protection of Refugee and Displaced Women**, with Susan Martin, Donald G. Herzberg Professor Emerita of International Migration at Georgetown University and Perry World House Visiting Fellow

GLOBAL LENS

Perry World House seeks to bring global culture and perspectives from around the world to Penn's campus through our Global Lens series. This series of events co-hosted with Penn's International Students and Scholar Services (ISSS) office, offers programming with a cultural dimension. Whether a foreign film, dance lesson, open-mic night for poetry and readings, or an international food festival, this program series reflects PWH's commitment to the importance of culture, language, the arts, and humanities in global exploration.

OTHER EVENTS

Beyond recurring programming, Perry World House responds to opportunities, partnerships, and breaking world events through special programs and unique events. During the 2017–2018 academic year, we welcomed special speakers including:

- › **Tommy Vietor**, host of *Pod Save the World* and one of the founders of Crooked Media, discussing the state of global politics and the pressing international issues of the day
- › **Congressman Adam Schiff**, U.S. Representative for California, discussing the ongoing congressional investigation into Russia's meddling in the 2016 U.S. Presidential election from his perspective as the ranking member of the House Permanent Select Committee on Intelligence
- › **Rabbi Lord Jonathan Sacks**, former Chief Rabbi of the United Hebrew Congregations of the Commonwealth, the largest synagogue body in the U.K., discussing the future of religion and global politics in conversation with University of Pennsylvania Chaplain Chaz Howard and with the support of Penn Hillel
- › **Amy Chua**, professor of law at Yale Law School and bestselling author, came to Perry World House to discuss her new book, *Political Tribes: Group Instinct and the Fate of Nations* with Perry World House Visiting Fellow Graeme Wood. Chua spoke about reversing foreign policy failures and overcoming destructive political tribalism
- › **David Bakradze**, the Ambassador of Georgia to the United States, and Victor Dolidze, State Minister of Georgia on European and Euro–Atlantic Integration, spoke with Michael Carpenter, senior director of the Penn Biden Center and former U.S. deputy assistant secretary of defense on E.U.–Georgia integration and Georgian governmental affairs
- › **Martin O'Malley**, former Governor of Maryland, Mayor of Baltimore, and presidential candidate, spoke at Perry World House about the future of U.S.–China relations. Fox Leadership International was instrumental in bringing Governor O'Malley to campus to engage with students and to share his wealth of government experience with the Penn community



Above: Rabbi Lord Jonathan Sacks speaks to Penn students about the future of religion and global politics.

Right: Congressman Adam Schiff of California discusses the Congressional investigation into Russia's involvement in the 2016 election.



The Perry World House Research Fellowship



GIVING STUDENTS THE EXPERIENCE AND OPPORTUNITY TO LAUNCH SUCCESSFUL CAREERS IN GLOBAL AFFAIRS IS CENTRAL TO PERRY WORLD HOUSE'S EDUCATIONAL GOALS. THE PERRY WORLD HOUSE RESEARCH FELLOWSHIP BUILDS ON THE RANGE OF STUDENT PROGRAMMING AT PWH AND GIVES ONE RECENT GRADUATE THE OPPORTUNITY TO WORK FOR A YEAR AT PWH.

This position is intended to be a stepping stone to future jobs in global policy or to advanced graduate study. The Research Fellow serves as a full-time member of the Perry World House team and contributes to the intellectual life of PWH, including projects within the Global Innovation Program, the World House Student Fellows Program, and administrative work, including managing the website and social media. The Research Fellow plays a vital role, in particular, in designing and administering the World House Student Fellows program each year. Perry World House strives to expose the Research Fellow to different career paths and topics while also equipping him/her with important professional skills.

The Research Fellowship affirms Penn's commitment to global affairs by preparing young graduates for long-term careers in bridging academic experience with policy careers and by encouraging them to follow their research interests. The fellow receives significant mentorship from Perry World House faculty leaders and has the opportunity to build connections with Visiting Fellows.

RESEARCH FELLOWS TO DATE INCLUDE:



2016-2017 STEPHANIE HERRMANN

Stephanie Herrmann (C'16): an international relations major, Herrmann is completing her master's degree at the London School of Economics and is in her first year of law school at American University in Washington, D.C.



2017-2018 ITAI BARSADE

Itai Barsade (C'17): a political science major, Barsade is a program assistant with the German Marshall Fund in Washington, D.C.

THE RECENT GRADUATES WHO HAVE SERVED AS RESEARCH FELLOWS HAVE UNIQUE CONNECTIONS TO PENN'S STUDENTS, HELPING ALL OF PERRY WORLD HOUSE'S PROGRAMMING BE A SUCCESS.



“THROUGH THE RESEARCH FELLOWSHIP, I WAS MENTORED; DEVELOPED AND ENHANCED MY RESEARCH, ANALYTIC, AND WRITING SKILLS; AND GOT EXCEPTIONAL EXPOSURE TO THE ACADEMIC AND PROFESSIONAL DIMENSIONS OF INTERNATIONAL AFFAIRS. I LEFT PERRY WORLD HOUSE WELL PREPARED AND POSITIONED TO PURSUE A CAREER IN FOREIGN POLICY.”

— Itai Barsade (C'17), Research Fellow 2017–2018

Students listen to then U.N. High Commissioner for Human Rights Zeid Ra'ad Al Hussein in conversation with PWH Director William Burke-White during the 2018 Global Shifts Colloquium.



PARTNERSHIPS

PARTNERSHIPS WITHIN AND BEYOND THE UNIVERSITY ARE CRITICAL TO OUR ABILITY TO FOSTER INTERNATIONAL POLICY ENGAGEMENT. THEY ENRICH OUR PROGRAMMING AND ENHANCE OUR IMPACT.

Our partnerships reach across Penn and outside it. We are animated by deep programmatic collaboration across Penn's 12 schools. We tackle difficult global policy questions with Philadelphia-based organizations, such as the Global Philadelphia Association, the Consular Corps Association, and the Foreign Policy Research Institute, among others. To advance engagement and understanding, we partner with local nonprofits that use a cultural lens, such as AI-Bustan Seeds of Culture. We foster academic collaboration with local universities, such as Temple University, to harness the best ideas and provide a community of learning and exchange.

These partnerships help us make available to the broader Philadelphia area the considerable intellectual and other resources of Penn and allow us take full advantage of the rich resources within Philadelphia of other globally-oriented efforts—and ultimately to have more sustained influence and impact.



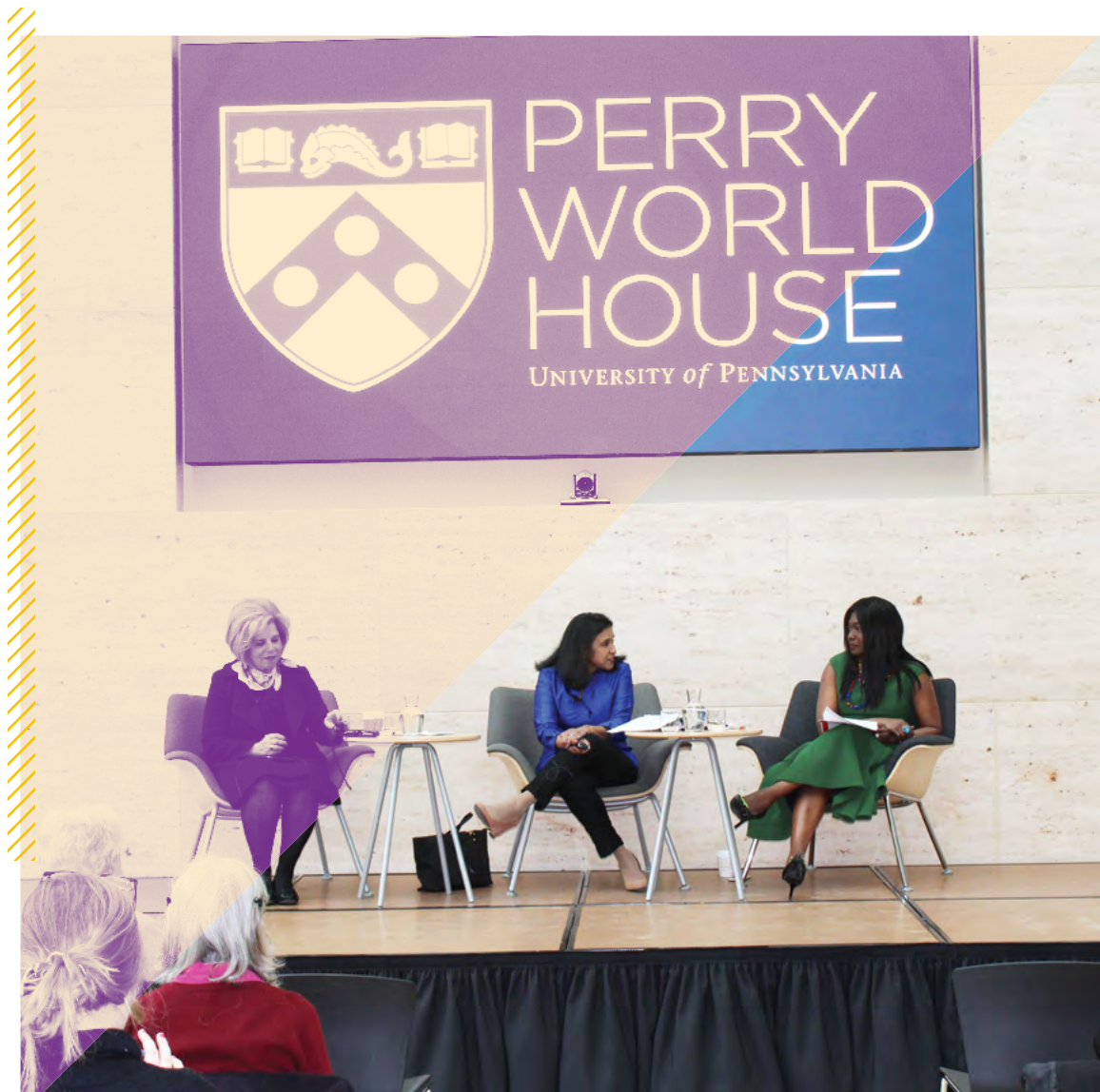
Partnering with the Penn Community



PERRY WORLD HOUSE WAS ESTABLISHED TO PROMOTE AND FACILITATE THE UNIVERSITY'S ENGAGEMENT WITH AND PROGRAMMING ON GLOBAL AFFAIRS.

To that end, Perry World House seeks to build partnerships across the Penn community that advance our shared commitment to global affairs. These co-sponsored events and activities build on the various points of substantive connection between PWH's global policy mission and the research, programs, and courses of Penn's schools, departments, centers, and institutes. Building bridges and connecting ideas and people across the University community is a cornerstone of Perry World House's catalytic impact. We serve this goal through a range of collaborations across Penn by supporting numerous partnered events and activities. In our second year, Perry World House partnered on events with faculty from 11 of Penn's 12 schools and served students from across the entire campus.

Penn Law Associate Dean for International Programs Rangita de Silva de Alwis moderates a conversation between H.E. Moushira Khattab, Ph.D., Egypt's former Minister of Family and Population and former Chair of the U.N. Committee on the Rights of the Child, and Aisha Oyeboade of the "Bring Back Our Girls" campaign in Nigeria.



JOINT VISITING FELLOWSHIPS

Perry World House welcomes the opportunity to partner with schools, programs, and institutes on Joint Visiting Fellowships.

This year, Perry World House hosted a week-long visit by Yevgenia Albats, editor-in-chief of the Russian political weekly *The New Times*, co-hosted with Kelly Writers House as part of a joint Writers-at-Risk program, which included public addresses, class guest speaking, lunch-time seminars, and one-on-one meetings with students. Albats's public comments focused on Russia's challenges to democratic institutions and practices around the world, including its attack on free expression, on an independent press, and other human rights violations.

PARTNERED RESEARCH & ENGAGEMENTS

Perry World House seeks opportunities to partner with schools, departments, programs, and institutes to advance shared research interests.

Our engagement around the World Urban Forum with the Kleinman Center for Energy Policy and the Penn Institute for Urban Research is emblematic thereof. This project, part of Perry World House's Global Shifts research theme, involved commissioning and publishing a white paper series in advance of the February 2018 World Urban Forum convening in Malaysia and staging a multidisciplinary exhibition of Penn research at the week-long event, in which a delegation of 14 Penn scholars, students, and staff participated.



Students gather in the Global Policy Lab before The World Today, a weekly event featuring intimate conversations on timely global issues.

Partnering with the Penn Community

CONTINUED

JOINT EVENTS

Perry World House regularly hosts, supports, and facilitates joint events with other schools, departments, centers, and institutes. Exemplary joint events from 2017–2018 include:

A RIVETING DISCUSSION ON U.S.-MEXICO RELATIONS

with 47th Vice President of the United States Joseph R. Biden and former President of Mexico Felipe Calderón during the first annual Penn Biden Leaders Dialogue, co-hosted by the **Penn Biden Center for Diplomacy and Global Engagement**.

A SYMPOSIUM ON THE NORTH KOREA CRISIS

with speakers Bill Richardson, former Governor of New Mexico, and David E. Sanger, chief Washington correspondent with *The New York Times*, co-hosted by the **Center for Ethics and the Rule of Law** and the **Browne Center for International Politics**. The symposium focused on potentials for, and obstacles to, negotiations with North Korea.

A DAY-LONG SYMPOSIUM IN HONOR OF INTERNATIONAL WOMEN'S DAY

on contestations and advances of global feminisms, co-sponsored with 10 other organizations, including: **Penn Law**; the **Middle East Center**; the **Alice Paul Center for Research on Gender, Sexuality, and Women**; and **Global Philadelphia**.

A PANEL ON FOREIGN-POLICY CAREERS AS PART OF GLOBAL CAREER WEEK, co-hosted with the Browne Center for International Politics and the Consular Corps Association of Philadelphia.

A KEYNOTE ADDRESS

by Luis Almagro, Organization of American States Secretary General, co-hosted by **Penn in Latin America** and the **Caribbean Initiative** and part of the **Wharton Latin America Conference**. His address focused on the contributions and challenges of the Organization of American States on the global stage.

Right: Deborah Thomas, professor of anthropology and former interim director of the Gender, Sexuality, and Women's Studies program, in conversation with Deputy Director LaShawn Jefferson at a day-long symposium in honor of International Women's Day.

Far right: Visitors and speakers from partnered events.

“GLOBAL FEMINISMS OFFER US A WAY TO ENGAGE THE WORLD THAT HOLDS WOMEN’S HUMAN RIGHTS AND EQUALITY AS CENTRAL, AS WE ENCOURAGE BROAD CIVIC PARTICIPATION, SECURE GREATER GOVERNMENT ACCOUNTABILITY, AND CHALLENGE ABUSES OF POWER.”

— LaShawn Jefferson, Deputy Director, Perry World House



Partnering with the Philadelphia Community



WE DERIVE ENORMOUS BENEFITS FROM BEING LOCATED IN PHILADELPHIA, THE NATION'S 6TH LARGEST CITY.

Philadelphia has robust and diverse nonprofit and business sectors, an impressive array of academic and cultural institutions, deep community-based organizations, and a well-earned reputation for being committed to global engagement. Local government has been on the front lines of global issues, including immigration policy, sustainable urbanization, and energy reform. Through partnerships with the nonprofit sector and local universities, Perry World House facilitates the engagement of Philadelphia-based institutions in global policy debates; deepens Penn students' exposure to and connection with Philadelphia-based organizations; and leverages Penn's knowledge and insights to benefit the broader Philadelphia community.

VISITING SCHOLARS FROM LOCAL UNIVERSITIES

Each year, Perry World House seeks to bring in at least one local Visiting Scholar from a university in the Philadelphia area, which helps build the community of globally focused scholars in the region.

This year, Roselyn Hsueh, an associate professor of political science at Temple University, joined Perry World House as a Visiting Scholar. As a local Visiting Scholar, Dr. Hsueh completed the full manuscript of her second book, under contract with Cambridge University Press. *Micro-institutional Foundations of Capitalism: National Sectoral Pathways to Development* investigates the mediating role of market governance in the relationship between global economic integration and industrial development in the BRICS. In fall 2017, Dr. Hsueh authored *The Washington Post* analysis, "China's Three New Economic Challenges for the U.S." In February (2018), she presented on "How Has China Redefined Globalization and What Are the Implications?" for our The World Today program.

LOCAL PARTNERSHIPS

- › A keynote address with former Philadelphia City Solicitor Sozi Pedro Tulante and local activist Yasmine Mustafa, CEO of Philadelphia-based ROAR for Good, on immigration policy, experienced locally and globally, at our 2018 Global Shifts Colloquium: Prospects for Reform on International Migration and Refugees
- › A keynote address from then-Director-General of the United Nations Educational, Scientific, and Cultural Organization Irina Bokova on the important role UNESCO plays in maintaining peace and security globally, organized with the Global Philadelphia Association
- › A symposium examining the politics and policy of East Asia's economic future, with the Foreign Policy Research Institute
- › An experts' workshop to advance understanding of the policy prospects for better supporting the various dimensions of and approaches to refugee integration under our Global Shifts theme, featuring the Southeast Asian Mutual Assistance Association Coalition (SEAMAAC), the Bhutanese American Organization, the African Cultural Alliance of North America, and Puentes de Salud
- › As a part of our Global Career week, a panel with diplomats from around the world for Penn students interested in careers in the foreign service with the Consular Corps Association of Philadelphia

International Visitors Grant Program

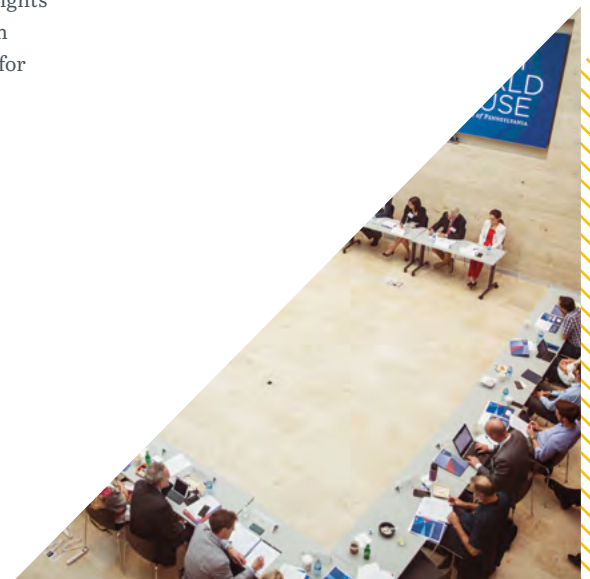


THROUGH THE INTERNATIONAL VISITORS GRANT PROGRAM, PERRY WORLD HOUSE PROVIDES DIRECT SUPPORT TO FACULTY, STUDENT GROUPS, SCHOOLS, AND DEPARTMENTS TO BRING THE WORLD TO PENN.

Through this small grants program, PWH facilitates others from the Penn community to bring thought leaders and policy experts from outside the U.S. to Penn's campus, thereby fostering collaboration across Penn departments, centers, and student groups. The selection process ensures a rich diversity of voices and experiences by helping to bring influential and engaging speakers to keynote conferences, guest lecture in classes, perform, mentor students, unveil new ideas, and collaborate with Penn professors and other academics; and support student-led groups in their efforts to provide extra-curricular enrichment and engagement opportunities to their fellow students.

During the 2017–2018 academic year, Perry World House provided International Visitors Grants to groups including:

- › **Penn in Latin America and the Caribbean** to bring a feminist Cuban rap artist to participate in its annual conference
- › **The Center for Media at Risk** to bring an investigative journalist from the Philippines to discuss the attacks journalism is facing
- › **The Wharton Africa Business Forum** to bring an African entrepreneur to give a master class
- › **The Political Science Department** to bring a scholar on the transnational protection of human rights in the Council of Europe and the European Union
- › **The International Affairs Association** to bring an activist to discuss contemporary human rights and democracy developments in Uganda and their implications for east Africa and beyond
- › **The Department of Medical Ethics and Health Policy** to bring a world-renowned professor of ethics to discuss the intersections of medical ethics, governance, and global security
- › **The Center for Advanced Research in Global Communications** to bring a French rhetorician and philosopher to participate in a symposium focused on media and the Islamic state
- › **The Middle East Center and Penn Law** to bring an Egyptian former senior minister, diplomat, and women's and children's human rights advocate to share her analysis about Egyptian human rights in honor of International Women's Day



A Global Hub on Penn's Campus



PERRY WORLD HOUSE AS A PHYSICAL BUILDING IS A STUNNING AND SIGNIFICANT ARCHITECTURAL CONTRIBUTION TO PENN'S CAMPUS.

The building is also a unique resource for the Penn community. It serves as a locus of activity and engagement for the broad range of students, faculty, and alumni interested in all things global. Perry World House is a space for these groups to convene, program, organize, and strategize. Student groups use our flexible and diverse public spaces to foster international camaraderie, promote international affairs and diplomacy on campus and the surrounding area, reward scholarship and service among students and practitioners of international studies, and conduct events with professors and politicians of all political leanings. Faculty use the building for conferences, workshops, and meetings. Other centers and programs at Penn often utilize PWH as a space to host convenings, conduct trainings, and run high-level meetings.



GROUPS THAT REGULARLY HELD EVENTS & MEETINGS IN PERRY WORLD HOUSE IN 2017-2018 INCLUDE:



DURING THE 2017-2018 ACADEMIC YEAR, MORE THAN 1,000 EVENTS, MEETINGS, AND CLASSES WERE HELD IN PERRY WORLD HOUSE.



Looking Ahead: 2018–2019 & Beyond



BUILDING ON THE SUCCESSES OF PERRY WORLD HOUSE'S FIRST TWO YEARS OF OPERATIONS, WE CONSTANTLY SEEK TO IMPROVE OUR PROGRAMS, EXPAND OUR IMPACT, AND FURTHER ELEVATE PENN'S GLOBAL ENGAGEMENT. TO THAT END, DURING THE 2018–2019 ACADEMIC YEAR, PERRY WORLD HOUSE WILL LAUNCH SEVERAL NEW PROGRAMS, INCLUDING:

WASHINGTON BRIEF SERIES

In May 2018, Perry World House launched a new series meant to get its conversations and scholarship directly into the hands of those making and influencing policy in the nation's capital. In PWH's new Washington Briefs, scholars, practitioners, and policymakers from Penn and elsewhere discuss the latest developments on some of the most important topics in global affairs. Thus far, two briefs have been held and attracted dozens of reporters, congressional staffers, executive branch officials, and think tank scholars.

The first Washington Brief in May 2018 looked at issues in the contested waters of the South China Sea. Scholars from Penn and practitioners discussed the latest military, legal, and diplomatic developments in the region, as well as what the United States, China, and others in the international community want in the vital South China Sea. In the second Washington Brief in June 2018, a group of leading scholars, practitioners, and policymakers from Penn and elsewhere discussed progress toward the United Nations Sustainable Development Goals.

Washington Briefs take place at the Penn Biden Center for Diplomacy and Global Engagement in Washington, D.C., an exceptional venue for policy engagement given its proximity to Capitol Hill and its mission of convening world leaders and advancing smart policy.

Mark Alan Hughes, director, Kleinman Center for Energy Policy; Eugénie Birch, co-director, Penn Institute for Urban Research; and William Burke-White, director, Perry World House, discuss the U.N. Sustainable Development Goals at a Washington brief at the Penn Biden Center.



GLOBAL LIGHTNING SCHOLARS

Perry World House seeks to support, engage, and connect with the leading emerging scholars in global affairs at formative moments in their careers. To that end, each year the Global Lightning Scholars program will bring a pre-tenure scholar from a leading research university around the world to join PWH and the Penn community for a semester or full academic year in residence in Philadelphia to produce a major research project or book.

THE INAUGURAL
LIGHTNING SCHOLAR
FOR THE 2018-2019
ACADEMIC YEAR IS
COSETTE CREAMER,
A PROFESSOR OF
POLITICAL SCIENCE
AT THE UNIVERSITY
OF MINNESOTA.

COURSE DEVELOPMENT GRANTS

In Spring 2018, Perry World House established a course enrichment grant program to build bridges between classes in the Penn curriculum and the world of global policy. The grants, with support from Carnegie Corporation of New York, will allow Penn faculty to make a course more policy-relevant by supporting design of a new course, curricular redesign of an existing course, guest speakers from relevant policy communities, development of policy-oriented case studies, or other creative connections with the policy world.



Donors & Support



INDIVIDUAL SUPPORT

Perry World House was envisioned, established, and built through the extraordinarily generous leadership gift from Lisa Perry and Richard C. Perry, W'77, University Trustee. The ongoing support, engagement, and friendship of the Perrys remain invaluable to our organization.

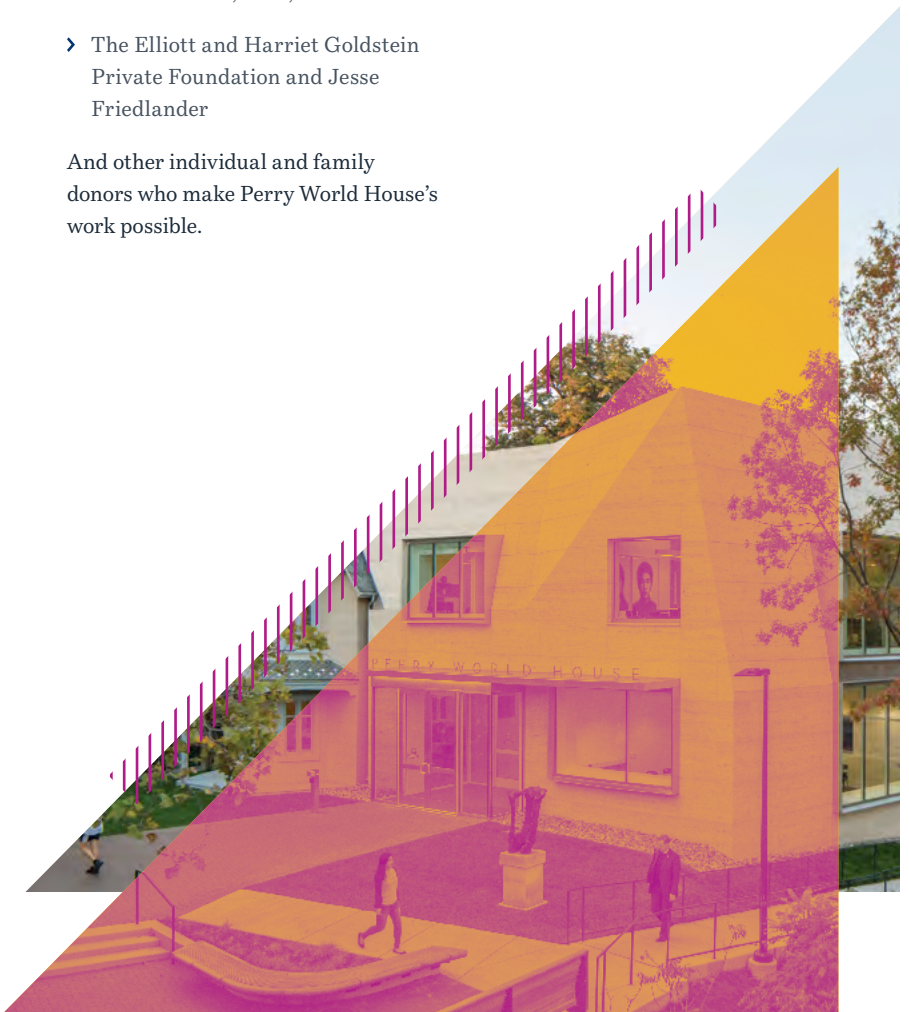
The operations of Perry World House rely heavily on the support of generous donors from across the Penn alumni community. We appreciate their shared commitment to our mission, their generous spirit, and their financial support.

- › Victoria S. H. Graham, W'85 and Mark R. Graham
- › The Joseph & Susan Gatto Foundation; Joseph D. Gatto, L'84, WG'84 and Susan Gatto
- › Paritosh V. Thakore, W'86 and Hemal Mirani, G'97, WG'97
- › The Elliott and Harriet Goldstein Private Foundation and Jesse Friedlander

And other individual and family donors who make Perry World House's work possible.

INSTITUTIONAL SUPPORT

A generous two-year grant from **Carnegie Corporation of New York** enables Perry World House, through its Global Innovation Program, to create a series of multi-disciplinary workshops that connect academics and policymakers in several critical global policy areas; support policy-relevant research linked to each workshop; and create new media platforms to disseminate findings from these workshops in ways that will generate faster and broader change.



“RIGHTS ARE LIKE BREATHING. I DON'T KNOW HOW MANY BREATHS YOU HAVE TO TAKE TO STAY ALIVE. YOU DON'T THINK ABOUT IT UNLESS YOU ARE THREATENED. IF SOMEONE'S HANDS ARE AROUND YOUR NECK, YOU KNOW HOW IMPORTANT THAT NEXT BREATH IS.”

— Zeid Ra'ad Al Hussein, then U.N. High Commissioner for Human Rights



Senior Leadership & Staff



PERRY WORLD HOUSE SENIOR LEADERSHIP



WILLIAM W. BURKE-WHITE

Richard Perry Professor; Inaugural Director, Perry World House

William Burke-White has served on the faculty at Penn Law School since 2005. An international lawyer and political scientist, Burke-White's research focuses on the relationship between law and politics in international affairs. His current scholarship examines how the rise of countries such as China, Russia, Brazil, and India is changing the international legal system and the prospects for effective international responses to global governance challenges. Burke-White has published extensively in the fields of international law and institutions, with particular emphasis on international criminal law, human rights law, and international financial law.

From 2009–2011, Burke-White served on the Secretary of State's Policy Planning staff at the U.S. Department of State, where he crafted recommendations on multi-lateral affairs, international institutions, and the Russian Federation.

He has served as a visiting professor at Harvard Law School; the Max Planck Institute for International and Comparative Law in Heidelberg, Germany; the Moscow State Institute of International Relations; and Mofid University in Qom, Iran. He holds bachelor's and law degrees from Harvard University and a master's degree and Ph.D. in international relations from Cambridge University, where he was a Fulbright Scholar.



MICHAEL C. HOROWITZ

Professor of Political Science; Associate Director, Perry World House

Michael Horowitz's research interests include technology and global politics, military innovation, the role of leaders in international politics, and geopolitical forecasting. He won the 2017 Karl Deutsch Award given by the International Studies Association for early career contributions to the fields of international relations and peace research. He is co-author of the book, *Why Leaders Fight* (2015), and author of *The Diffusion of Military Power: Causes and Consequences for International Politics* (2010). He has also published in a wide array of peer-reviewed journals, as well as more popular outlets such as *The New York Times* and *Politico*.

Horowitz previously worked for the federal Office of the Under Secretary of Defense for Policy. He is affiliated with the Center for a New American Security, the Foreign Policy Research Institute, and the Center for Strategic and International Studies, and is a term member of the Council on Foreign Relations. Horowitz has held fellowships at Harvard's Weatherhead Center, Olin Institute, and Belfer Center. He earned his Ph.D. in government from Harvard and a bachelor's degree in political science from Emory University.



LASHAWN R. JEFFERSON

Deputy Director, Perry World House

LaShawn Jefferson brings to Perry World House more than two decades of experience in legal and policy advocacy, strategic planning, and research and writing on women’s human rights. She joined Perry World House after seven years at the Ford Foundation, where she worked to advance women’s human rights globally and in the U.S. Her specific focus at the Foundation was on capacity building, strategic communications and engagement, intersectional leadership and analysis, and research.

Prior to that, Jefferson spent 14 years in leadership positions at Human Rights Watch, where she led its women’s rights research and advocacy initiatives. Jefferson provided strategic and intellectual guidance on women’s international human rights, crafted and executed long-term advocacy strategies, and represented Human Rights Watch at key national and international fora. She received a bachelor’s degree from Connecticut College and master’s degree in international relations and Latin American studies from the Johns Hopkins School of Advanced International Studies.

ACKNOWLEDGMENTS

The entire Perry World House team helped to draft this report. More important than the writing itself is the work they all do that inform it. Particular thanks goes to Ashley Napier, assistant to the director, for her patience, humor, and stewardship during the entire undertaking.

It is our enormous good fortune to benefit from the extraordinary vision, commitment, and shared purpose of the leadership of University of Pennsylvania, in particular President Amy Gutmann, Provost Wendell Pritchett, Vice Provost for Global Initiatives Ezekiel Emanuel, and Executive Director of Penn Global Amy Gadsden. Their collective leadership inspires us to great accomplishments.

Design by Untuck

PERRY WORLD HOUSE STAFF



DR. JOHN GANS, JR.

Program Manager for the Future of the Global Order Research Theme



LISA JOURDAN

Operations & Events Manager



ANDRO MATHEWSON

Research Fellow



ASHLEY NAPIER

Assistant to the Director



JOCELYN PERRY

Program Manager for the Global Shifts Research Theme



DEBBIE RECH

Visitor Coordinator



BRIAN YANSAK

Administrative Coordinator





UNIVERSITY OF PENNSYLVANIA | PERRY WORLD HOUSE

3803 LOCUST WALK, PHILADELPHIA, PA 19104

215.573.5730

@PERRYWORLDHOUSE

FACEBOOK.COM/PERRYWORLDHOUSE

GLOBAL.UPENN.EDU/PERRYWORLDHOUSE